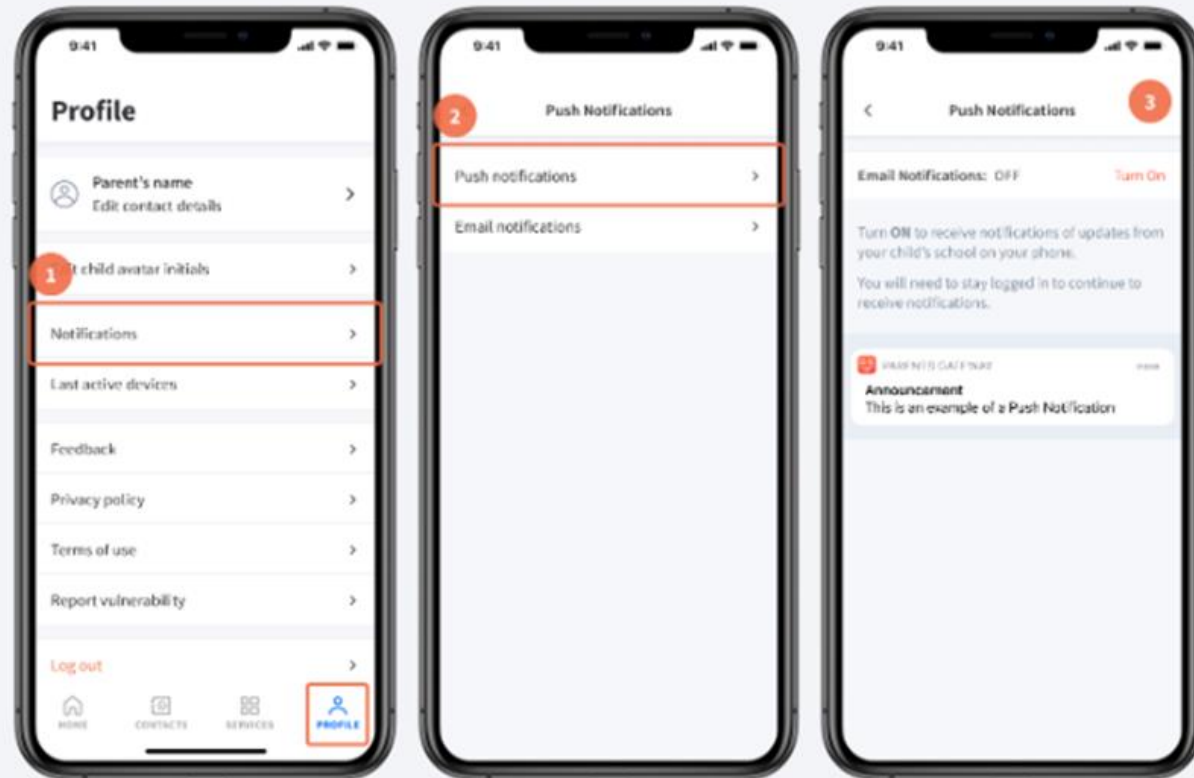


PARENTS GATEWAY MATTERS

Switch on PG notifications to receive timely updates

The push notification feature on the phone needs to be enabled.

1. Go to 'Profile' > 'Notifications'
2. Tap on 'Push Notifications'
3. If 'Push Notifications' is 'OFF', tap 'Turn On' to enable it



**WELCOME TO
SEC 1 PARENTS
ENGAGEMENT
SESSION
9 JAN 2026**



PUNGGOL SECONDARY SCHOOL

ACHIEVERS WITH CHARACTER



Welcome to the PSS family!



PUNGGOL SECONDARY SCHOOL

ACHIEVERS WITH CHARACTER



WHAT WE BELIEVE IN PSS

- **Character** is key for education.
- A **disciplined** environment is conducive for learning.
- Our students are young adults and would be treated so.
- All students can **learn**, and opportunities will be given to develop them **holistically**.



How do you help your child chart their own paths and thrive in this “new world”?



✦ **ACCELERATING SPEED OF
TECHNOLOGICAL
ADVANCEMENT
& DISRUPTION**
Changes & Opportunities



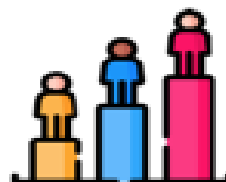
**A DIGITALLY CONNECTED BUT
OTHERWISE FRAGMENTED
WORLD**
Ideologies & Cultures

**DISRUPTIONS BROUGHT ON BY
CLIMATE CHANGE**
Resilience & Adaptability



**WHAT DOES
OUR WORLD
LOOK LIKE
RIGHT NOW?**

**DEMOGRAPHIC SHIFTS &
AN EVOLVING SOCIAL
FABRIC**
Fault Lines & Cohesion



**STRESS & OVER-EMPHASIS ON
ACADEMIC QUALIFICATIONS**
Skills & Dispositions

**PREVALENCE OF
WELL-BEING CONCERNS**
Resilience & Mindsets





Top 10 Skills of the Future

According to the third edition of the World Economic Forum's Future of Jobs Report, half of us will need to reskill in the next five years, as the "double-disruption" of the economic impacts of the pandemic and increasing automation transforming jobs takes hold.



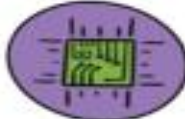
**Analytical Thinking
& Innovation**



**Leadership
& Social Influence**



**Active Learning
& Learning Strategies**



**Technology Use,
Monitoring & Control**



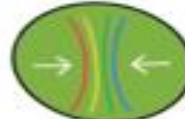
**Complex Problem
Solving**



**Technology Design
& Programming**



**Critical Thinking
& Analysis**



**Resilience, Stress
Tolerance & Flexibility**



**Creativity, Originality
& Initiative**



**Reasoning, Problem
Solving & Ideation**

CURRENT TRENDS

- 50% of all employees will need re-skilling by 2025, as adoption of technology increases, according to the World Economic Forum's Future of Jobs Report.

- Critical thinking & problem-solving top the list of skills employers believe will grow in prominence in the next five years.

- Newly emerging this year are skills in self-management such as active learning, resilience, stress tolerance and flexibility.

- Respondents to the Future of Jobs Survey estimate that around 40% of workers will require reskilling of six months or less

TYPE OF SKILL

-  Problem Solving
-  Self-Management
-  Working with People
-  Technology Use & Development

For more information visit: <https://www.weforum.org/agenda/2020/10/top-10-work-skills-of-tomorrow-how-long-it-takes-to-learn-them/>
Infographic Created by: Diane Bleck, Founder of the Center for Visual Facilitation • www.CenterforVisualFacilitation.com

Growth Economies



Source: Skills Demand for the Future Economy report

Top Skills in Demand



Communication



Problem
Solving



Self-directedness
Self
Management



Collaboration

Active Contributor



Creative
Thinking



Vision

Future-ready Punggolites who are **active contributors**

Mission

To nurture a **vibrant** community of **self-directed** and **adaptable** Punggolites, **grounded in values**.

Values

Propriety Righteousness Integrity Self-Respect

礼

义

廉

耻

Motto

Achievers with Character





VISION: Future-ready Punggolites who are active contributors

MISSION: To nurture a vibrant community of self-directed and adaptable Punggolites, grounded in values

Adaptable

- Adapting one's strategies and behaviours to apply skills in different, unfamiliar or challenging contexts.
- **Being reflective and ready to learn from mistakes.**
- Having **resilience** in the pursuit of goals despite difficulties and unexpected complications.

Propriety
Righteousness
Integrity
Self-respect

Self-Directed Learner

Takes responsibility for his/her own learning, is curious, **reflective** and persevering in the lifelong pursuit of learning, driven by passion and **purpose**.

Active Contributor

Empathetic and open-minded to collaborate effectively in teams, **exercises initiative**, has courage to take risks responsibly, is innovative, and **strives for excellence**.

PUNGGOL SECONDARY SCHOOL

ACHIEVERS WITH CHARACTER

PUNGGOL SECONDARY SCHOOL

ACHIEVERS WITH CHARACTER

Active Contributor

Self-Directedness

Adaptability

Active Contributor through serving (e.g. leadership roles, Punggol Carnival, Maths Games Day, peer tutoring, helping your classmates, class norms)

Self-Directedness through Self-Discipline and Classroom Routines (e.g. handphone lockers, doing of homework, HBL day, Student-Initiated Learning)

Building Resilience and **Adaptability** through learning from failures, competitions, ALP



EMPOWERING STUDENT VOICE

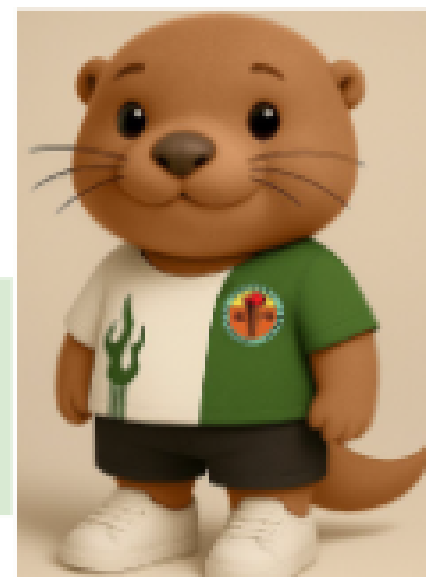
Developing students who embody **self-directedness, adaptability, and active contribution** through meaningful opportunities to shape their learning journey and school environment.

Punggol Conversations Initiative:

- Student leaders facilitate dialogues during CCE lessons
- Creates safe spaces for honest feedback and creative suggestions
- Ensures every Punggolite's voice is heard and valued

From Ideas to Reality:

- Student suggestions transformed into concrete programmes
- Recent successes: Punggol Carnival, sticker design competition, mascot design competition
- Demonstrates genuine commitment to student input



By Naura
Chinta
(2D 2025)



BUILDING TOMORROW'S LEADERS TODAY

21st Century Skills Development:

- Self-directedness: Students take initiative in identifying improvements
- Adaptability: Working within school parameters to realise ideas
- Active contribution: Meaningful engagement in school community





SCHOOL VALUES

Propriety
Righteousness
Integrity
Self-respect





OUR SCHOOL VALUES

Values	Code of Conduct
Propriety (禮) – Believes in behaving appropriately at all times.	<ul style="list-style-type: none">• Polite and respectful towards others• Caring and considerate towards others dutifully• Diligent and Self-Disciplined in learning• Motivated to enquire and clarify
Righteousness (義) – Believes in doing what is right, and for the common good.	<ul style="list-style-type: none">• Courageous in doing what is right and just for the greater good of society ACTIVE CONTRIBUTORS
Integrity (廉) – Believes in being honest, upright and fair.	<ul style="list-style-type: none">• Truthful, sincere and careful in thoughts, speech and actions• Honourable in keeping promises to others• Committed to do one's best
Self-Respect (耻) – Believes in behaving and thinking in ways that will not cause one to be ashamed of oneself.	<ul style="list-style-type: none">• Self-Managing SELF-DIRECTED• Differentiating right from wrong

SELF-DIRECTED

Understanding your child

TRANSITION FROM PRIMARY SCHOOL

- **Overwhelmed** by a different school environment, longer days, and a wider range of subjects
- Navigating the **stress of making new friends**, fitting in with peers, and finding their place in a new community
- Influenced by peer relationships and online interactions, which shape their **self-image and confidence**
- **Adjusting to new routines**, multiple subject teachers, and increased personal responsibilities
- **Feeling tired** from earlier school hours and heavier curriculum load
- **Experiencing typical teen changes** — seeking independence but still needing support and reassurance

Supporting your child

How you can support your child

- Take an **active interest** in what your child is curious about or learning, their friends and online activities, and not only their grades
- **Acknowledge** their feelings and normalise setbacks as part of dealing with changes
- **Affirm** effort and small improvements to build confidence
- Guide them gradually in **managing new routines** (e.g., timetable, preparing materials, balancing schoolwork and CCA)
- Encourage **healthy habits** — sleep, screen time, exercise, and family connection
- **Respect** their growing independence, while being present as a consistent and supportive guide

Importance of Family Support

The Termly Check-In Surveys indicate that whilst *friends in school* are steadily growing as a source of support for Secondary School students, families remain a **primary source of support** when they are feeling stressed or anxious — demonstrating the **vital role parents play in their children's mental well-being**.



Parents remain a **primary source** of support for their child

We value your partnership to raise a *‘Happy, Kind, and Confident Generation Together’.*

**1 Respectful
Communication**

2 Role Models

3 Real Connections



Respectful Communication

**Foster kind words and actions
between schools and educators**



Listen to and understand each other's perspectives and concerns regarding each child



Communicate kindly using official channels. Teachers are not required to share their personal mobile numbers



Respect each other's time by communicating during working hours





Respectful Communication

School-home Partnership

- We value a trusting and respectful relationship between schools and parents. This includes respecting teachers' personal time and space.
- **Communication guidelines:**
 - While teacher-parent communication is encouraged, **teachers are not expected to provide their personal phone number to parents.**
 - **Teachers can be contacted during office hours on weekdays (7.30am – 5.30pm) via the office phone or their work email.**
 - **Teachers are not expected to respond to parents' and students' queries beyond office hours and during the weekends except for emergencies.**
 - Parents should contact the school's General Office for assistance if the queries and/or requests made during working hours are urgent.



Engagement Charter

- The partnership between schools and parents is an essential one.
- By promoting mutual courtesy and respect in our interactions with each other, we can be good role models for our children and build authentic partnerships that will better benefit our children.



Role Models

Show our children the skills and values they need for life



Find joy in everyday experiences with our children



Instill confidence by encouraging responsibility and believing in our children's abilities



Model good values in words and actions



Check out this video on MOE YouTube for tips on how parents can support the social-emotional learning of their children.



Real Connections

Cultivate strong relationships and healthy habits in this digital age

Establish good habits for our children to stay confident and in control of their technology use



Provide a balanced mix of engaging online and offline activities, at school and at home

Build strong bonds through shared experiences and meaningful conversations



Check Parenting for Wellness Toolbox for conversation starters to facilitate meaningful conversations, and practical strategies on parenting in a digital age.



STRONGER BONDS, BETTER LEARNING

PSS handphone policy in alignment with MOE's guidelines since 2025 Handphones will be locked up in designated handphone lockers in the classrooms during curriculum hours.

Positive Results Observed:

- Increased peer-to-peer interaction during break times (board games in canteen)
- More students engaging in physical activities during break times (frisbee, volleyball, football)





MODES OF COMMUNICATION BETWEEN PARENTS & SCHOOL

Parent-school partnership is critical to support your child's development.

Letters via
Parents
Gateway

Meet-The-Parents Session
(Mid-year, Year End)

Parent Support
Group events

School events such as
Partners' Career
Sharing Session and
Cross-Country

- Email: punggol_ss@moe.edu.sg
 - Tel: 6489 7851
- **Email addresses of all teachers can be found on the school website.**
Please understand that teachers might not be able to respond immediately. If there are urgent matters, please call the school directly.



QUALITY PARTNERSHIP WITH PARENTS



Chinese New Year Celebration



International Friendship Day



Parents Support Group booth
at Punggol Carnival



Care Pack Distribution for
Sec. 4 & 5 students



Partners' Career Sharing Session



Cross-country at Marina Barrage



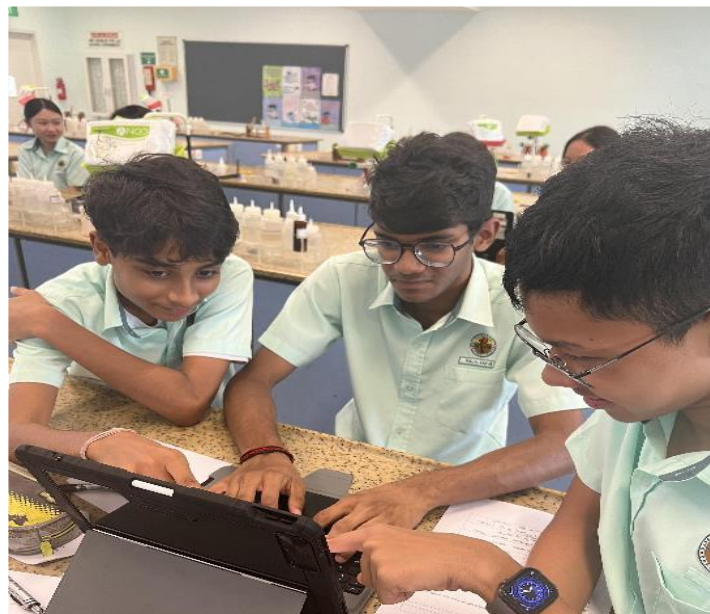
Racial Harmony Day



Parent-child bonding activity

**Partner us.
Together we can develop Future-Ready Punggolites who
are Active Contributors!**

SCHOOL EXPECTATIONS



PUNGGOL SECONDARY SCHOOL
ACHIEVERS WITH CHARACTER

DISCIPLINE

The school emphasises on values-driven holistic education for our students.

We are Fair and Consistent in our discipline approach and we educate our students to minimise occurrence of re-offence.

The school does not condone any form of bullying (including online spaces) and all bullying cases will be handled appropriately.

We support our students' social and emotional well-being, through counselling by our school counsellor, and support from the form teachers, Year Heads and other relevant staff.

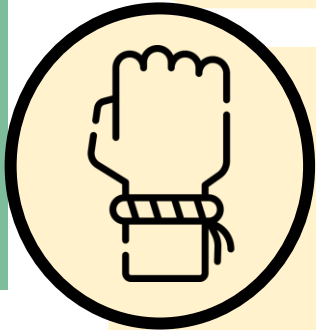


GROOMING



HAIR

- Reasonable hair length
- Natural style – no perms
- Natural hair colour only / no perms
- Tying up of hair (for girls with hair longer than shoulder length.)



ACCESSORIES

- Girls – One pair of **ear studs**
- No ear studs / earrings for boys
- No accessories on wrists, neck etc.
- No nail polish, coloured contact lenses



GROOMING STANDARDS



ATTIRE

- **School Uniform:**

Mon: School Polo-tee & school pants/skirts

Tues – Fri: Polo-tee or school T-shirt & school pants/ skirts.

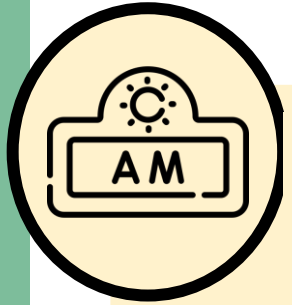
- **PE attire**

School T-shirt & school PE shorts

- Polo-tee or school T-shirt must be tucked in at all times.
- School PE shorts must be worn during PE lessons.
- **Make up is strictly not allowed.**

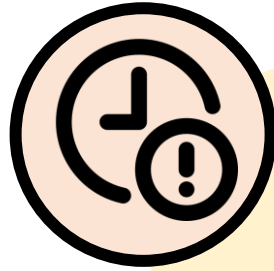


ATTENDANCE and LATE-COMING



MORNING ATTENDANCE

- Form Teachers will mark attendance during morning assembly at 7.30am / 9.00am.
- An automated SMS will be sent to the parent's mobile at about 9.30am / 10.30am if students are not marked present.



LATE COMING

- Students will be considered late if they are not ready for assembly with their class by 7.30am (Mon-Thurs)/ 9.00 am (Friday).
- Students who are late will have their handphones confiscated.
- Students are required to serve detention for third late-coming offence onwards.



ABSENCE FROM SCHOOL



ABSENCES

- Absences must be supported by a medical certificate or other valid documents.
- Only 2 Parents' Letter with a valid reason will be accepted per semester (including absence from CCA).
- For Weighted Assessments or examinations, students must provide a medical certificate for his/her absence. Parents' letter will **not** be accepted.



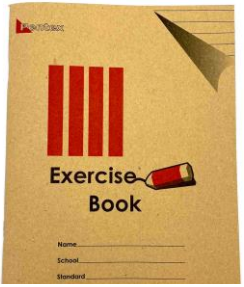
HOMework SUBMISSION



- Students are encouraged to get their own homework diary or notebooks to take note of their homework or assignments.
- Students can also key it into their calendars on their Personal Learning Devices (PLDs).

When a student neglects to submit / bring homework:

1. Teachers will note down incident in e-Student Management Record.
2. Students will be issued a warning (first incident) and then demerit point (subsequent incidences).
3. Student are to complete work within a stipulated time frame OR after school.
4. Parents will be engaged to help students manage their workload.



HANDPHONE USAGE

- Students are **not** allowed to use their handphones during the entire curriculum time.
- If students choose to bring their handphones to school, they are to keep them in the handphone lockers in their classrooms.
- Students who are caught in possession of their handphones during curriculum time will have their handphones **confiscated**.
- Students can only collect their handphones after serving a 30-minute detention after the end of their last lesson.





SAFETY – Entering Into School

All visitors, **except delivery contractors and pre-registered guests**, are to register at the security guard house. Visitors will be given a sticker, and the sticker is to be pasted on the attire. The visitors are to wait at the Foyer of the General Office.

Visitors are not allowed to walk around the school unless accompanied by any of the school staff.



DROPPING OFF IN SCHOOL (Dry Weather)

- 1) Only Taxis, PHVs and Cars displaying Punggol Sec decals are allowed entry into school for drop-off purposes.
- 2) Parents should drop off their children outside the school gate.
- 3) Security officers at the gate will provide guidance as needed.



PUNGGOL SECONDARY SCHOOL

ACHIEVERS WITH CHARACTER



DROPPING OFF IN SCHOOL (Wet weather)

- 1) All cars will be allowed entry for the students to alight at the sheltered foyer.
- 2) Please be patient when exiting the school as the traffic will be heavy and pedestrian crossings will be prioritised.

TIMETABLE

- We have an odd/even week timetable structure, with HBL day on even week Fridays.
- Duration of one period: 20 min
- Duration for breaks: 20/40 min
- Individualised timetables have been given on the first week of school.

Punggol Secondary School, Singapore

	1A - ABCDEFGH Odd Week																			
	1	2	3	4	5	6	7	8	9	10	11	12	13	14	15	16	17	18	19	20
	8:00 - 8:20	8:20 - 8:40	8:40 - 9:00	9:00 - 9:20	9:20 - 9:40	9:40 - 10:00	10:00 - 10:20	10:20 - 10:40	10:40 - 11:00	11:00 - 11:20	11:20 - 11:40	11:40 - 12:00	12:00 - 12:20	12:20 - 12:40	12:40 - 13:00	13:00 - 13:20	13:20 - 13:40	13:40 - 14:00	14:00 - 14:20	14:20 - 14:40
Mo	CCE Chris Chia / Natalie Goh		Classroom 1A Science Emily				Break	Junaidah / Lim Yong Kiong / Lua Yik Pin / Moo Sheau Yuan / Yogen / Liu Wei / Guo Xu / Premesha / Eng Siang Yong / Julaiha / Tan Shu Yi / Esther Lye / Sabrina / Srividya				Classroom 1A Math Jaselin Ang		Break		Junaidah / Lim Yong Kiong / Lua Yik Pin / Moo Sheau Yuan / Shian Pui Kuen / Yogen / Naqiah / Esther Lye / Sabrina / Srividya / Liu Wei / Premesha / Guo Xu / Eng Siang Yong / Julaiha / Tan Shu Yi				
Tu	YH Time Chris Chia / Natalie Goh	Classroom 1A Geo Elaine Lui				Break	Classroom 1A Science Emily		Classroom 1A Math Jaselin Ang		Classroom 1A EL Natalie Goh		Break		D&T Sultan Shaheed		Kitchen 1 / Kitchen 2 FCE Eunice Low / Noorashikin			
We	Classroom 1A EL Natalie Goh		Break	Classroom 1A Math Jaselin Ang				Classroom 1A Science Emily		Classroom 1A EL Natalie Goh		Sabrina / Srividya / Guo Xu / Premesha / Liu Wei / Eng Siang Yong / Julaiha / Tan Shu Yi		Break		Mu Royce Teo				



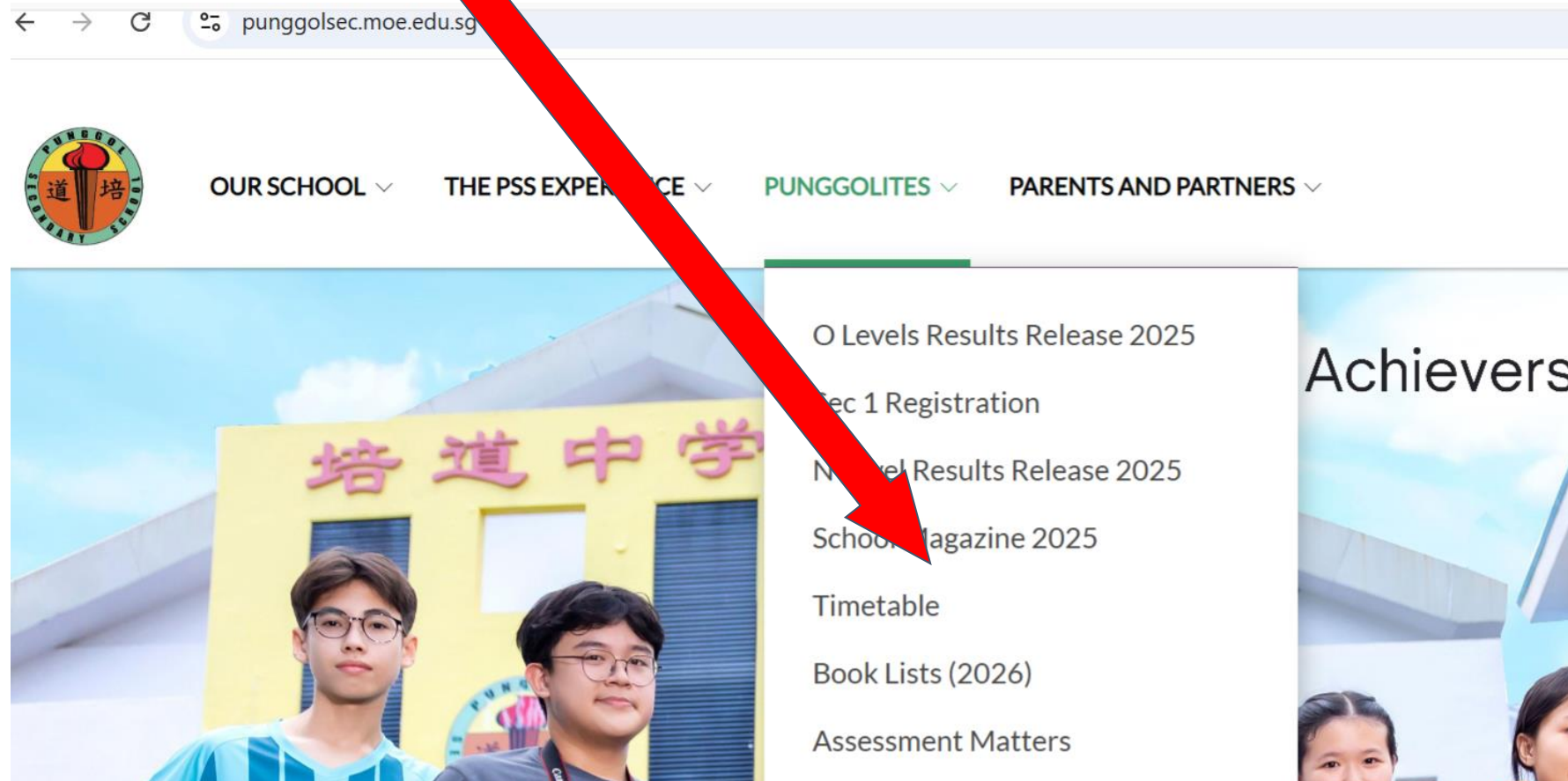
1a – Even Week

We	Classroom 1A History Sitha		Break	Classroom 1A EL Natalie Goh		Break	Premesha / Liu Weiqi / Eng Siang Yong / Julaiha / Tan Shu Yi / Esther Lye / Sabrina / Srividya		PE1 Tay Eng Leng	Workshop 1 / W D& Sultan Shaheed Gek	
Th	CCE Chris Chia / Natalie Goh		Junaidah / Lim Yong Kiong / Lua Yik Pin / Moo Sheau Yuan / Shian Pui Kuen / Yogeswar / Naqiah / Esther Lye / Sabrina / Srividya / Liu Weiqi / Premesha / Guo Xu / Eng Siang Yong / Julaiha / Tan Shu Yi		Break	Music Room Mu Royce Teo / Ang Xin Wei		Break	Classroom 1A Science Emily		M Jaselin A
Fr	SIL		Chin Ann / Mabel Tan / Noor / Cheng / Mabel / Stephen Low / Lim Zhen / Yeo / Sebastian Lee / Kelvin Lee / Lawrence / Agnes / Emily	Lye / Julaiha / Junaidah / Lim Yong Kiong / Lua Yik Pin / Moo Sheau Yuan / Sabrina / Shian Pui Kuen / Srividya / Tan Shu Yi / Lee Bei Si / Wardi / Naqiah / Guo Xu / Premesha	HBL Math	Lee Pei Hua / Lin Sijin / Natalie Goh / Natasha / Noor Farzan / Joann David / Kelly / Chan / Fajri / [FAJT] Razinah / [FAJT] Wen Ting	HBL English	/ Chris Chia / Ding MD / Eunice Ong / Gerald / Ho Wei Lim / James Goh / Jaselin Ang / Ong / Wee / Wee / Abigail / Tay Choon Yee	HBL Math		



TIMETABLE

- Class timetables can be found on the school website.



1A INDIVIDUALISED TIMETABLE Odd Week

Punggol Secondary School, Singapore

	1	2	3	4	5	6	7	8	9	10	11	12	13	14	15	16	17	18	19	20	21	22	23	24	25
	8:00 - 8:20	8:20 - 8:40	8:40 - 9:00	9:00 - 9:20	9:20 - 9:40	9:40 - 10:00	10:00 - 10:20	10:20 - 10:40	10:40 - 11:00	11:00 - 11:20	11:20 - 11:40	11:40 - 12:00	12:00 - 12:20	12:20 - 12:40	12:40 - 13:00	13:00 - 13:20	13:20 - 13:40	13:40 - 14:00	14:00 - 14:20	14:20 - 14:40	14:40 - 15:00	15:00 - 15:20	15:20 - 15:40	15:40 - 16:00	16:00 - 16:20
Mo	CCE Gerald Foo / Masrurah			Tee Bei Si / Chen Xinghui Julaiha / Junaidah / Mdm Mani Lim Yong Kiong / Lua Yik Pin Moo Sheau Yuan / Shian Pui Kuen / Yogeswari / Naqiah Koon Yeow / Esther Lye Sabrina / Srividya			Break 1A	Chen Xinghui / Koon Yeow Naqiah / Julia / Junaidah Mdm Mani / Lim Yong Kiong Lua Yik Pin / Moo Sheau Yuan Shian Pui Kuen / Tee Bei Si Yogeswari			Break 1A	Science Agnes			E1-03 EL Jill Yong										
Tu	YH Time Gerald Foo Masrurah	E1-03 Lit Rina / Jill Yong			Break 1A	PE1 Joel Wei			Tee Bei Si / Koon Yeow / Naqiah Chen Xinghui Julaiha / Junaidah Mdm Mani / Lim Yong Kiong / Moo Sheau Yuan / Lua Yik Pin / Shian Pui Kuen / Yogeswari Esther Lye Sabrina / Srividya			Art Raihana			Break 1A		E1-03 Science Agnes								
We	Workshop 1, Workshop 2 D&T Sultan Shaheed / Lee Kah Gek			Break 1A	E1-03 Math Ho Wei Ling / Eddie			Break 1A	E1-03 EL Jill Yong			E1-03 Geo Rosmiyati													
Th	Music Room Mu Royce Teo			Break 1A	E1-03 EL Jill Yong			E1-03 History Sindhya			E1-03 Science Agnes			Break 1A		E1-03 Math Ho Wei Ling / Eddie									
Fr				FT Time Masrurah Gerald Foo	E1-03 Math Ho Wei Ling Eddie		FCE Kala / Jessica See		PE1 Joel Wei		CCE Gerald Foo / Masrurah														

Timetable generated: 3/1/2025

aSc Timetables



PUNGGOL SECONDARY SCHOOL

ACHIEVERS WITH CHARACTER

1A INDIVIDUALISED TIMETABLE

Even Week

Punggol Secondary School, Singapore

	1	2	3	4	5	6	7	8	9	10	11	12	13	14	15	16	17	18	19	20	21	22	23	24	25	
	8:00 - 8:20	8:20 - 8:40	8:40 - 9:00	9:00 - 9:20	9:20 - 9:40	9:40 - 10:00	10:00 - 10:20	10:20 - 10:40	10:40 - 11:00	11:00 - 11:20	11:20 - 11:40	11:40 - 12:00	12:00 - 12:20	12:20 - 12:40	12:40 - 13:00	13:00 - 13:20	13:20 - 13:40	13:40 - 14:00	14:00 - 14:20	14:20 - 14:40	14:40 - 15:00	15:00 - 15:20	15:20 - 15:40	15:40 - 16:00	16:00 - 16:20	
Mo	CCE			E1-03				Break	MTL Tee Bei Si / Koon Yeow Chen Xinghui / Zulaiha Junaidah / Mdm Mani / Lim Yong Kiong / Lua Yik Pin Moo Sheau Yuan / Shian Pui Kuen / Yogeswari / Naqiah Esther Lye / Sabrina / Srividya				Break		E1-03 Science				PE1							
	Gerald Foo / Masrurah			Jill Yong				1A					1A	Agnes				Joel Wei								
Tu	YH Time	E1-03 Science				Art		Break	FCE				D&T		Break		E1-03 Math									
	Gerald Foo / Masrurah	Agnes				Raihana		1A	Kala / Jessica See				Sultan Shaheed / Lee Kah Gek		1A		Ho Wei Ling Eddie									
We	PE1			Break		Math			E1-03		E1-03 Geo		Mu		E1-03 Science		Break		E1-03 Lit							
	Joel Wei			1A		Ho Wei Ling / Eddie					Rosmiyati		Royce Teo		Agnes		1A		Rina / Jill Yong							
Th	CCE			MTL Tee Bei Si / Chen Xinghui / Zulaiha / Junaidah / Mdm Mani / Lua Yik Pin / Lim Yong Kiong / Moo Sheau Yuan / Shian Pui Kuen / Yogeswari / Koon Yeow / Naqiah / Esther Lye / Sabrina / Srividya		Break		MTL Koon Yeow / Chen Xinghui / Zulaiha / Junaidah / Mdm Mani / Lua Yik Pin / Moo Sheau Yuan / Shian Pui Kuen / Tee Bei Si / Yogeswari / Naqiah		E1-03 History			E1-03 Math		Break		E1-03 EL									
	Gerald Foo / Masrurah			1A					Sindhya			Ho Wei Ling / Eddie		1A		Jill Yong										
Fr				HBL Science				HBL Math			HBL MTL			HBL English		SIL 2A/2B/2C/2D/2E/2F/ 2G/2H/2I/3A/3B/3C/3D/ 4E/4F/4G/4H/5A/1/1A/ 1B/1C/1E/1D/1F/1G/ 1H/1I/3A/3B/3C/3D/3E/ 3F/3G/3H/AA										
	Debbie Teo / Jeslyn (Chem) / Eugene Neo / Jasmine Goh / Audrey Chua / Tan Shun Ann / Mabel Tan / Ng Shoon Chong / Masrurah / Siti Ezzah / Qiong Kai Zhenghong / Merlin Yeo / Sebastian Lee / Kelvin Lee / Lawrence Tang				Boon Wee / Eddie / Tng Say Ping / Alex Tan / Chris Chong / MD / Eunice Ong / Gerald Foo / Ho Wei Ling / James Goh Jaseli / Qiong Kai Wei / Ong Wei Wei / Siti Ateka / Tang Chong Woei			Yogeswari / Chen Xinghui / Eng Siang Yong Esther Lye / Zulaiha / Junaidah / Mdm Mani / Lim Yong Kiong / Lua Yik Pin / Moo Sheau Yuan / Sabrina / Shian Pui Kuen / Srividya / Tan Shu Yi / Tee Bei Si / Wardi / Naqiah / Koon Yeow			Anju Babu / Siti Zulaiha / Benjamin Seethon / Jill Yong / Dexter Tan / Katherine Teoh / Lee Pei Hua / Lip Siin / Natalie Goh / Natasha Yow / Noor Hafizah / Rina / Jaclyn Siow															

Timetable generated: 3/1/2025

aSc Timetables



PUNGGOL SECONDARY SCHOOL

ACHIEVERS WITH CHARACTER

ASSESSMENT MATTERS

- One Weighted Assessment (WA) per term from Term 1 to 3
- End-of-year examination in Term 4
- Students will be tested based on the content that has been taught. Subject teachers will inform students on the content and date nearer to the WA/Exam.
- Parents will be informed via Parents Gateway on how to get access to exam timetables on the school website.

Allocation of percentage per semester:

WA1	15%
WA2	15%
WA3	15%
End-of-year Examination	55%



O Levels Results Release 2025

Sec 1 Registration

N Level Results Release 2025

School Magazine 2025

Timetable

Book Lists (2026)

Assessment Matters

Dear Students,

Please refer to your respective assessment timetable:

Weighted Assessment 3

Secondary 1

 [Sec 1 WA3 Letter](#)

Secondary 2

 [Sec 2 WA3 Letter](#)

Secondary 3

 [Sec 3 WA3 Letter](#)

End of Year (EYE) Examination

Secondary 1

Secondary 2

Secondary 3

Secondary

Sec. 4 Express



ASSESSMENT MATTERS

- Alternative Assessments(AA) are modes of assessment that include journals, group projects, oral presentations, and individual performance tasks.
- Students are allocated a designated timeframe to prepare their Alternative Assessments and are required to meet a specific submission deadline.
- Only a medical certificate is accepted as a valid reason for absence from a weighted assessment/examination. Letters from parents are not accepted.
- For non-submission by deadline, students will be given ZERO marks.

Zero marks will be given for any form of dishonesty or exam malpractice.





CCA ALLOCATION & SELECTION



PUNGGOL SECONDARY SCHOOL

ACHIEVERS WITH CHARACTER

CCA ALLOCATION EXERCISE

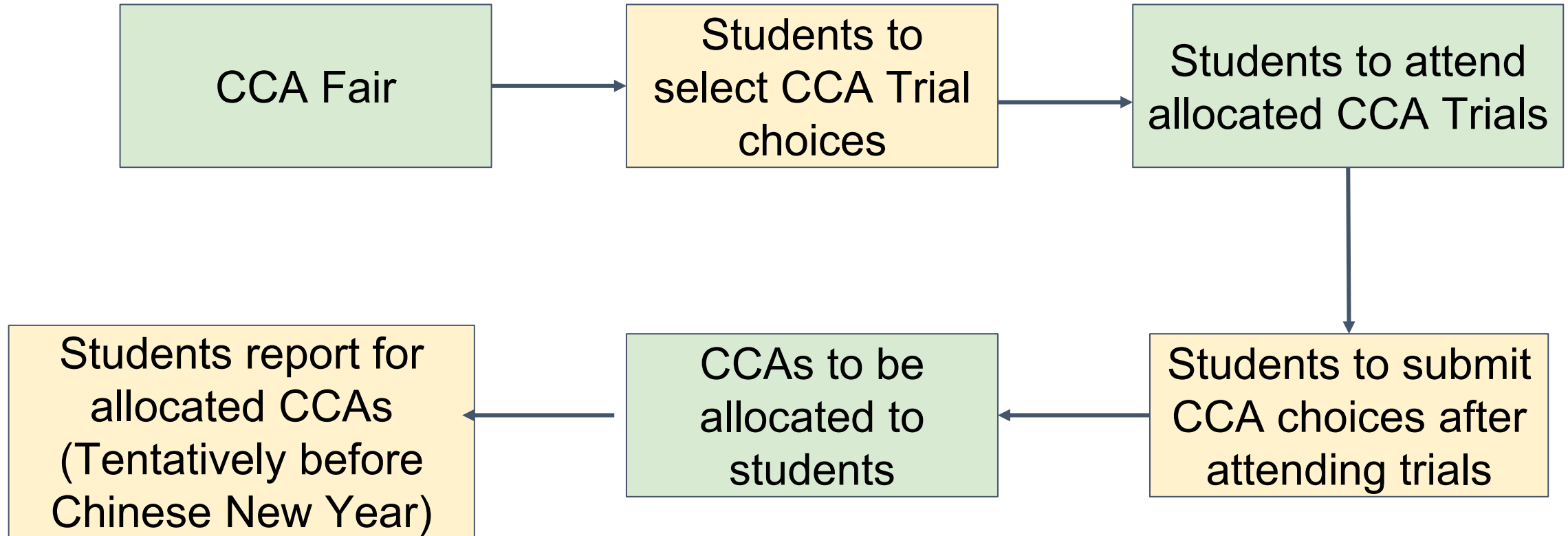
- CCA is an integral part of a student's holistic development.
- To help our new Secondary One cohort identify suitable CCAs, we have specifically arranged the following:
 - CCA briefing during the orientation
 - All Secondary One students had the opportunities to know more about the CCAs during the CCA Fair on 7 and 9 Jan.

OUR CCAs



CCA ALLOCATION EXERCISE

More information
will be shared on
PG and school
website.



OVERVIEW OF CCA MATTERS

	Overview Timeline of Events	Date
1	CCA Briefing for Secondary 1	6 Jan (Tues – YH Time)
2	CCA Fair in school	7 Jan 2026 (Weds) (1500hrs – 1800hrs)
	CCA Briefing on how to make their CCA Trial Choices via FormSG	9 Jan 2026 (Fri) (start 0730hrs in school)
3	Students to make their CCA Top 2 Trial Choices via FormsSG	9-11 Jan 2026
4	Students informed of their CCA Trial Allocation by FT	by 15 Jan 2026
4a	PG letter to parents – information	by 16 Jan 2026
5	CCA Trials	19, 21, 26 Jan 2026



OVERVIEW OF CCA MATTERS

6	Briefing to Sec 1s on how to use the inCAMPUS website to indicate their CCA Top 5 Choices	27 Jan (Tues – YH Time)
6a	PG letter to parents to inform that students are to submit CCA Choices	27 Jan (Tues, after YH Time)
7	Submission of CCA Choices (by students)	Open on 27 Jan 2026 Close by 29 Jan 2026.
8	Release of CCA posting	by 5th Feb, Thurs 6th Feb Friday, FTs to show during FT time (f2f)
9	Students to report to allocated CCA	9 Feb 2026, Monday



Sec 1 Photo Taking

Date:	15 Jan 2026 (<u>Thur</u>)
Time:	Scheduled class slots
Price:	\$5 for 4 passport photographs (Exact cash payment to be made directly to the photography vendor.)
Uses:	Three photographs are required for student profiling, report book and CCA purposes. One photograph will be returned to the students for their personal use.
Attire:	Polo t-shirt with skirt/pants



SCHOOL- HOME PARTNERSHIP



PUNGGOL SECONDARY SCHOOL

ACHIEVERS WITH CHARACTER



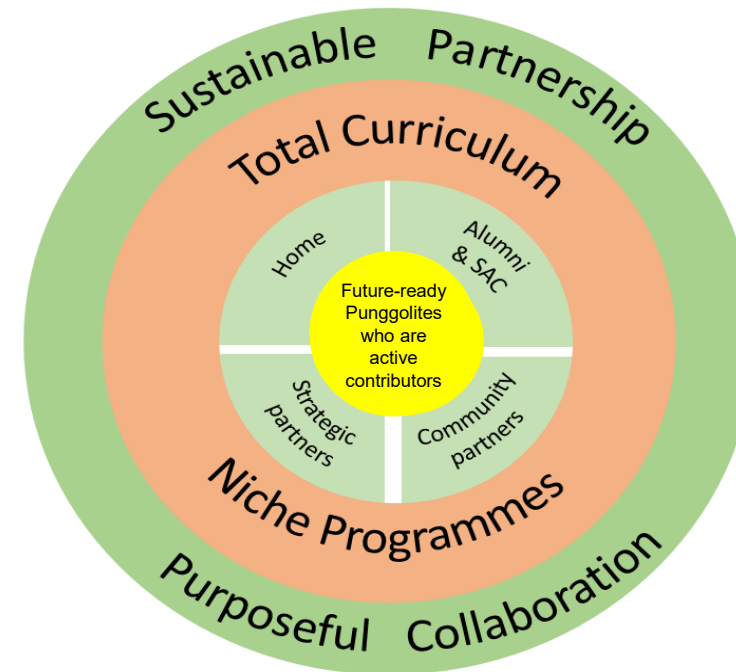
PUNGGOL SECONDARY SCHOOL

ACHIEVERS WITH CHARACTER



WHOLE SCHOOL APPROACH

- Parents are our key stakeholder.
- The school would want to partner the parents to build a nurturing environment to support the growth and holistic development of your child.
- We welcome your participation and involvement.





Research has shown that children whose parents are involved in their educational journey have been found to have **better self-esteem**, are **more self-disciplined**, show **positive attitudes**, and exhibit **higher aspirations** and **motivation** towards school.

**Be an active partner in
the education of your
children.**



PARENT SUPPORT GROUP

Why join the PSG?

- Gain better understanding of school policy, school activities and programmes
- Help your child cope better with school life
- Share parenting experience
- Build closer relationship with your family

What are the roles of the PSG?

- Provide inputs on school policies and goals, curriculum issues, programmes, student performance and conduct.
- Provides a channel for parents to raise issues and concerns, seek clarifications and provide constructive feedback.
- Parents can opt for greater involvement in the school.

How Parents can volunteer?

- Support school activities: CCA, school events and programmes.
- Participate in school activities: CCA, school events and programmes.
- Act as resource person: talks & networking

**Join
us!**




<https://go.gov.sg/psspg-appform>




Care Corner Families for Life

- **Ready Together for Secondary 1 – Confident Parenting for Positive Strategies** is a two-part online seminar that offers practical, evidence-based strategies to equip you with practical strategies to support your child's transition into secondary school and foster positive family relationships.
- These sessions will equip you with tools to:
 - See Your Teen's Perspective – Understand their world and emotions
 - Co-create Responsibility – Share ownership of routines and choices
 - Coach Self-Discipline & Problem-Solving – Guide them to manage challenges
 - Help Build Connections with Family & Friends – Create lasting bonds with family and friends

Session 1
 **Date: 24 Jan 2026**
Time: 9am to 11.30am

Session 2
Date: 27 Jan 2026
Time: 7.30pm to 9.30pm

 **Conducted virtually via Zoom**



Care Corner Families for Life

- Each parent must **register individually** using the link above or the QR code in the attached poster.
- Parents are encouraged to attend both sessions to benefit fully from the programme.
- Sign up by 17 January.
- Should you require any further clarifications about the above sessions, please contact Care Corner Families For Life (ffl@carecorner.org.sg / 6978 4090) or Ms Yap Su Fen (su_fen_yap@schools.gov.sg).
- A PG letter on this will be sent out after this talk.

