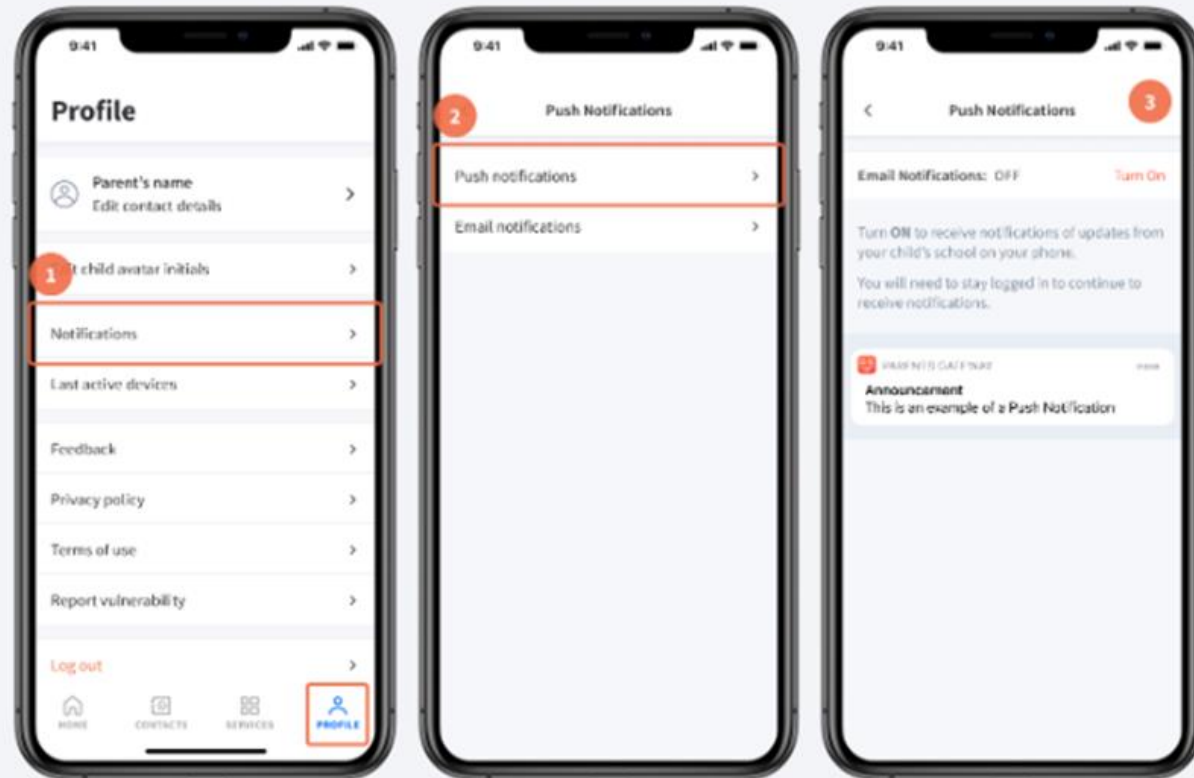


PARENTS GATEWAY MATTERS

Switch on PG notifications to receive timely updates

The push notification feature on the phone needs to be enabled.

1. Go to 'Profile' > 'Notifications'
2. Tap on 'Push Notifications'
3. If 'Push Notifications' is 'OFF', tap 'Turn On' to enable it



WELCOME TO SEC 1 PARENT ENGAGEMENT SESSION

10 JAN 2025



PUNGGOL SECONDARY SCHOOL
ACHIEVERS WITH CHARACTER



to the PSS family!



PUNGGOL SECONDARY SCHOOL

ACHIEVERS WITH CHARACTER

LIST OF 2025 FORM TEACHER EMAIL ADDRESS:

<https://www.punggolsec.moe.edu.sg/our-school/2025-form-teachers/>





WHAT WE BELIEVE IN PSS

- **Character** is key for education.
- A **disciplined** environment is conducive for learning.
- Our students are young adults and would be treated so.
- All students can **learn**, and opportunities will be given to develop them **holistically**.



How do you help your child chart their own paths and thrive in this “new world”?



✦ **ACCELERATING SPEED OF
TECHNOLOGICAL
ADVANCEMENT
& DISRUPTION**
Changes & Opportunities



**A DIGITALLY CONNECTED BUT
OTHERWISE FRAGMENTED
WORLD**
Ideologies & Cultures

**DISRUPTIONS BROUGHT ON BY
CLIMATE CHANGE**
Resilience & Adaptability



**WHAT DOES
OUR WORLD
LOOK LIKE
RIGHT NOW?**

**DEMOGRAPHIC SHIFTS &
AN EVOLVING SOCIAL
FABRIC**
Fault Lines & Cohesion



**STRESS & OVER-EMPHASIS ON
ACADEMIC QUALIFICATIONS**
Skills & Dispositions

**PREVALENCE OF
WELL-BEING CONCERNS**
Resilience & Mindsets





Top 10 Skills of the Future

According to the third edition of the World Economic Forum's Future of Jobs Report, half of us will need to reskill in the next five years, as the "double-disruption" of the economic impacts of the pandemic and increasing automation transforming jobs takes hold.



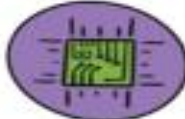
**Analytical Thinking
& Innovation**



**Leadership
& Social Influence**



**Active Learning
& Learning Strategies**



**Technology Use,
Monitoring & Control**



**Complex Problem
Solving**



**Technology Design
& Programming**



**Critical Thinking
& Analysis**



**Resilience, Stress
Tolerance & Flexibility**



**Creativity, Originality
& Initiative**



**Reasoning, Problem
Solving & Ideation**

CURRENT TRENDS

- 50% of all employees will need re-skilling by 2025, as adoption of technology increases, according to the World Economic Forum's Future of Jobs Report.
- Critical thinking & problem-solving top the list of skills employers believe will grow in prominence in the next five years.
- Newly emerging this year are skills in self-management such as active learning, resilience, stress tolerance and flexibility.
- Respondents to the Future of Jobs Survey estimate that around 40% of workers will require reskilling of six months or less

TYPE OF SKILL

-  Problem Solving
-  Self-Management
-  Working with People
-  Technology Use & Development

For more information visit: <https://www.weforum.org/agenda/2020/10/top-10-work-skills-of-tomorrow-how-long-it-takes-to-learn-them/>
Infographic Created by: Diane Bleck, Founder of the Center for Visual Facilitation • www.CenterforVisualFacilitation.com

Growth Economies



Source: Skills Demand for the Future Economy report

Top Skills in Demand



Communication



Problem
Solving



Self-directedness
Self
Management



Collaboration



Creative
Thinking

Active Contributor

OUR VISION

Future-ready Punggolites who are active contributors

OUR MISSION

To nurture a vibrant community of self-directed and adaptable Punggolites, grounded in values

OUR MOTTO

Achievers with Character





Active Contributor

Empathetic and open-minded to collaborate effectively in teams, **exercises initiative**, has courage to take risks responsibly, is innovative, and **strives for excellence**.

VISION: Future-ready Punggolites who are active contributors

MISSION: To nurture a vibrant community of self-directed and adaptable Punggolites, grounded in values

Adaptable

- Adapting one's strategies and behaviours to apply skills in different, unfamiliar or challenging contexts.
- **Being reflective and ready to learn from mistakes.**
- Having **resilience** in the pursuit of goals despite difficulties and unexpected complications.

Propriety
Righteousness
Integrity
Self-respect

Self-Directed Learner

Takes responsibility for his/her own learning, is curious, **reflective** and persevering in the lifelong pursuit of learning, driven by passion and **purpose**.

PUNGGOL SECONDARY SCHOOL

ACHIEVERS WITH CHARACTER

PUNGGOL SECONDARY SCHOOL

ACHIEVERS WITH CHARACTER



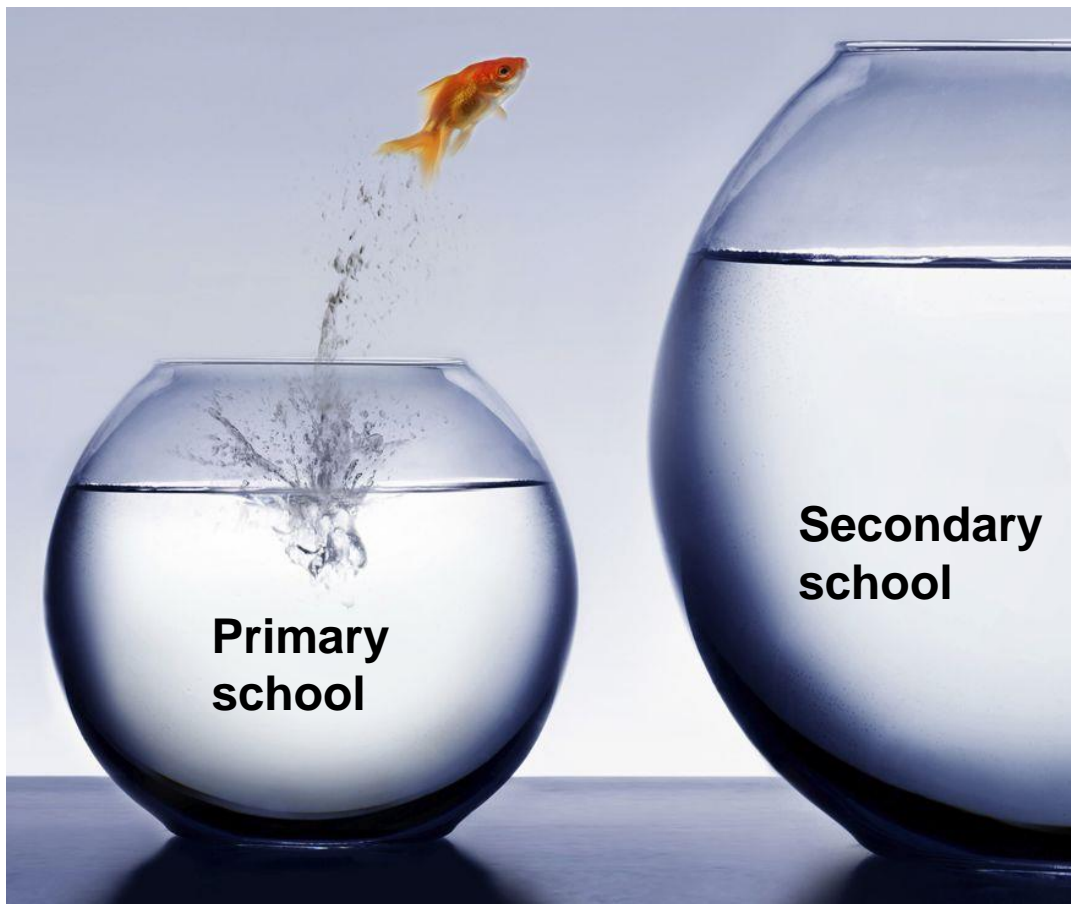
OUR SCHOOL VALUES

Values	Code of Conduct
Propriety (禮) – Believes in behaving appropriately at all times.	<ul style="list-style-type: none">• Polite and respectful towards others• Caring and considerate towards others dutifully• Diligent and Self-Disciplined in learning• Motivated to enquire and clarify
Righteousness (義) – Believes in doing what is right, and for the common good.	<ul style="list-style-type: none">• Courageous in doing what is right and just for the greater good of society ACTIVE CONTRIBUTORS
Integrity (廉) – Believes in being honest, upright and fair.	<ul style="list-style-type: none">• Truthful, sincere and careful in thoughts, speech and actions• Honourable in keeping promises to others• Committed to do one's best
Self-Respect (耻) – Believes in behaving and thinking in ways that will not cause one to be ashamed of oneself.	<ul style="list-style-type: none">• Self-Managing SELF-DIRECTED• Differentiating right from wrong

SELF-DIRECTED



TRANSITION FROM PRIMARY SCHOOL



- New school
- Youngest in the school
- From 4 subjects to 10
- New subjects (Humanities, D&T, FCE)
- Longer school days (dismissal by 3pm on most days)
- Compulsory CCAs
- Greater peer influence
- Greater “freedom”
- Transition into teens / young adults



TRANSITION FROM PRIMARY SCHOOL



Recognise that it will be different.

More than ever, your relationship with your child is important.

Manage your expectations, learn to “let go” more & seek to understand your child.



HOW CAN I SUPPORT MY CHILD?

Build Relationships

- Spend quality time to build relationships, do things together as a family
- Show care, love and support
- Share with your child your personal experiences (transition from Pri to Sec)

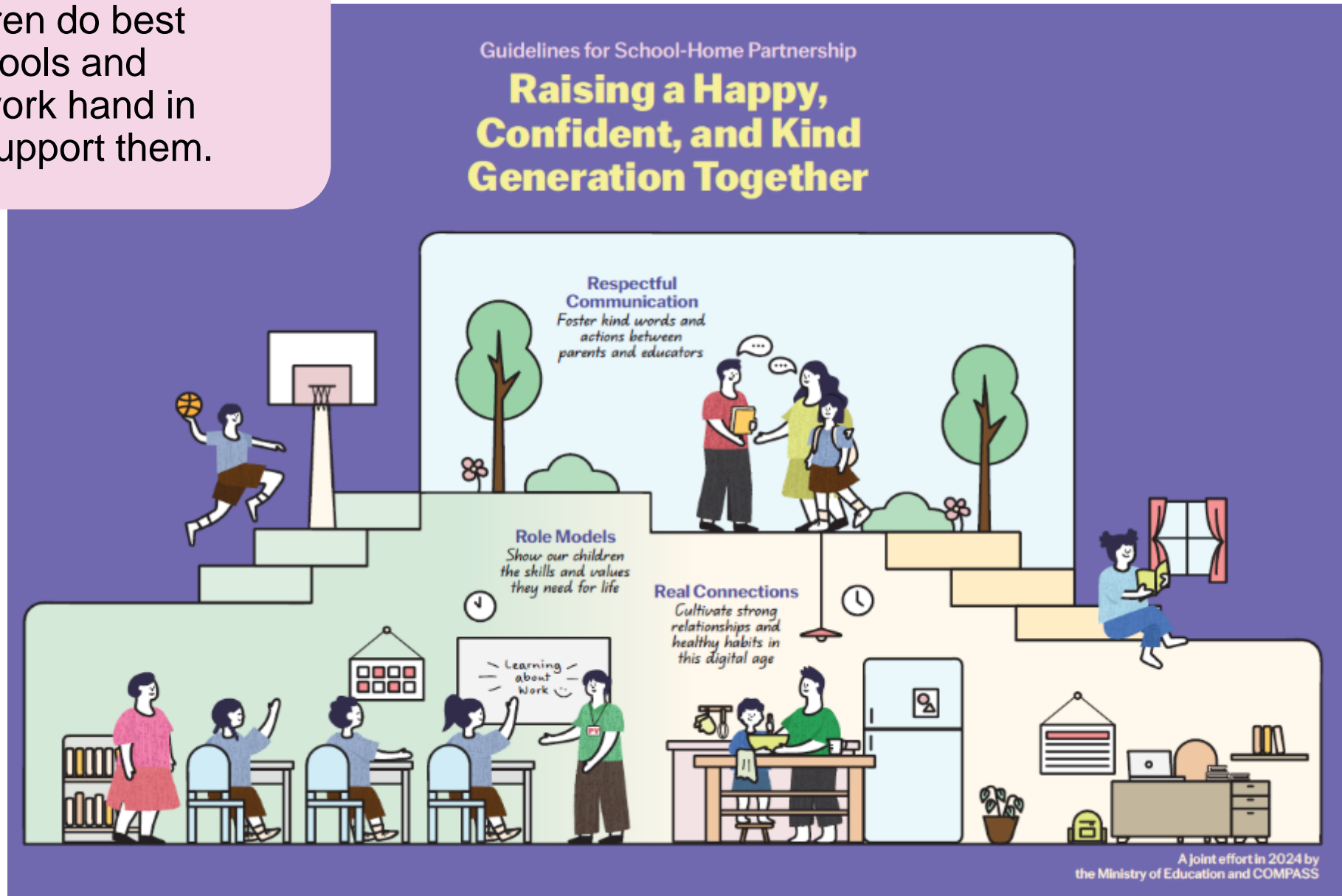
Take Interest

- Take an interest in your child's life, friends, activities, school life
- Have regular chats (and not only on school work)

Reinforce good habits

- Use of digital devices
 - Sleeping routines
 - Read
 - Help your child to grow and be a self-directed learner
- e.g.
- How to make decisions
 - How to set targets, review strategies, monitor progress, plan for improvement
 - Set parameters

Our children do best when schools and parents work hand in hand to support them.



3 areas we can work together on to foster School-Home Partnership

1 Respectful Communication

2 Role Models

3 Real Connections



Respectful Communication

**Foster kind words and actions
between schools and educators**



Listen to and understand each other's perspectives and concerns regarding each child



Communicate kindly using official channels. Teachers are not required to share their personal mobile numbers



Respect each other's time by communicating during working hours

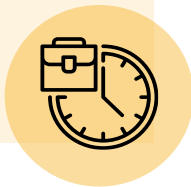




Respectful Communication

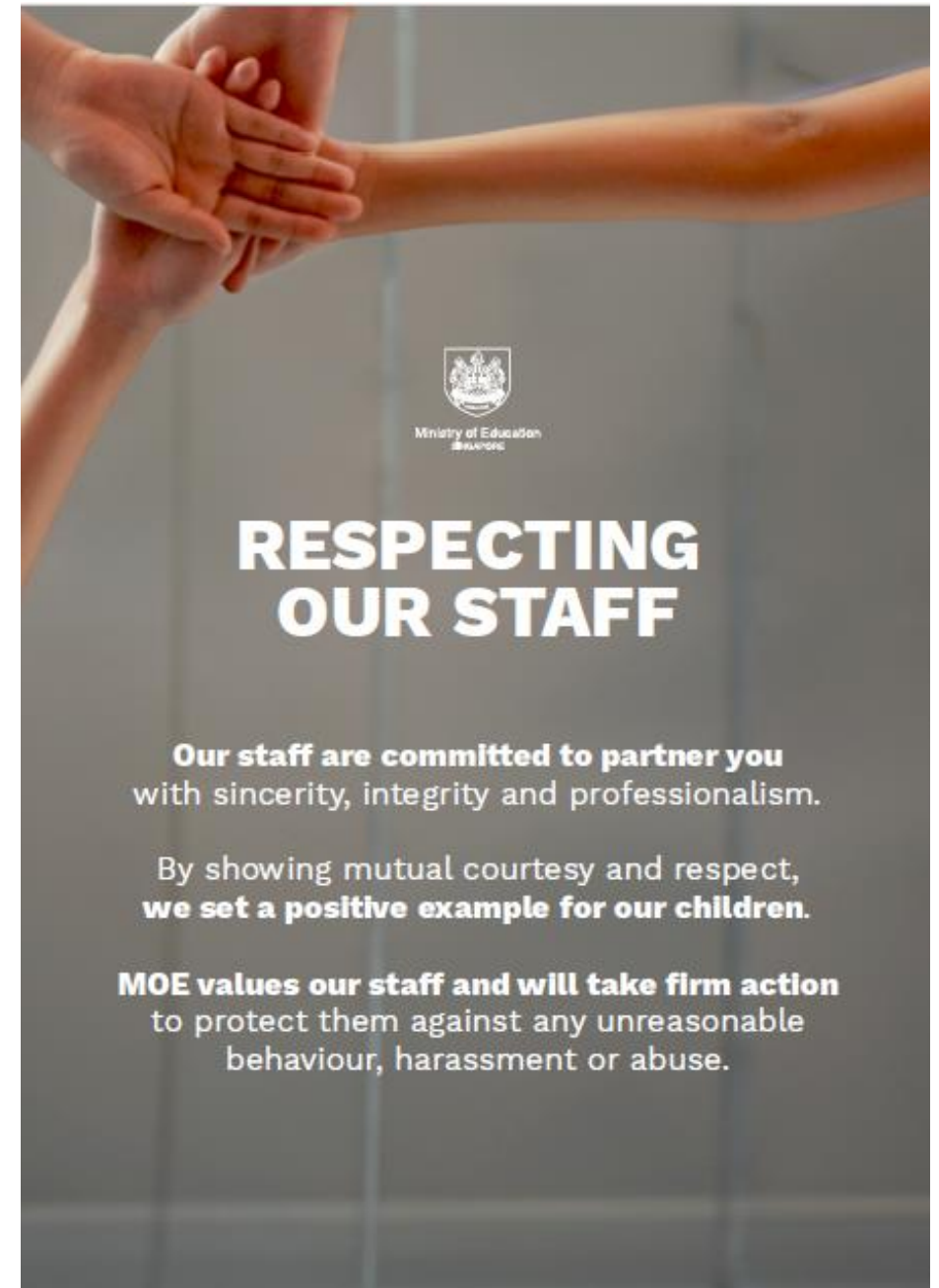
School-home Partnership

- We value a trusting and respectful relationship between schools and parents. This includes respecting teachers' personal time and space.
- **Communication guidelines:**
 - While teacher-parent communication is encouraged, **teachers are not expected to provide their personal phone number to parents.**
 - **Teachers can be contacted during office hours on weekdays (7.30am – 5.30pm) via the office phone or their work email.**
 - **Teachers are not expected to respond to parents' and students' queries beyond office hours and during the weekends except for emergencies.**
 - Parents should contact the school's General Office for assistance if the queries and/or requests made during working hours are urgent.



Engagement Charter

- The partnership between schools and parents is an essential one.
- By promoting mutual courtesy and respect in our interactions with each other, we can be good role models for our children and build authentic partnerships that will better benefit our children.



Role Models

Show our children the skills and values they need for life



Find joy in everyday experiences with our children



Instill confidence by encouraging responsibility and believing in our children's abilities



Model good values in words and actions



Check out this video on MOE YouTube for tips on how parents can support the social-emotional learning of their children.



Real Connections

Cultivate strong relationships and healthy habits in this digital age

Establish good habits for our children to stay confident and in control of their technology use



Provide a balanced mix of engaging online and offline activities, at school and at home

Build strong bonds through shared experiences and meaningful conversations



Check Parenting for Wellness Toolbox for conversation starters to facilitate meaningful conversations, and practical strategies on parenting in a digital age.





HONOUR TEACHERS

“Parents of children today tend to take the side of their children when any disputes occur rather than first listen to the teacher’s version of events. Instead of leading their children, many parents today are being led by their children... **Parents have to realise that by not co-operating with teachers in school and granting them legitimate authority over their children, their children are learning to dishonour authority and elders, including their own parents...**

Of course teachers are not perfect, but **when parents interact with teachers** in the presence of their children, **they need to do so with due honour and respect for the teachers.**”

Extracted from Winning with Honour by Lim Siong Guan & Joanne Lim



MODES OF COMMUNICATION BETWEEN PARENTS & SCHOOL

Parent-school partnership is critical to support your child's development.

Letters via
Parents
Gateway

Meet-The-Parents Session
(Mid-year, Year End)

Parent Support
Group events

School events such as
Partners' Career
Sharing Session and
Cross-Country

- Email: punggol_ss@moe.edu.sg
 - Tel: 6489 7851
- Email addresses of all teachers can be found on the school website. Please understand that teachers might not be able to respond immediately. If there are urgent matters, please call the school directly.



INAUGURAL PSS GIVES BACK!



PARTNERS'
CAREER
SHARING
SESSION

Partner us.

Together we can develop
Future-Ready Punggolites
who are Active
Contributors!



2024 RACIAL
HARMONY DAY
CELEBRATION

PUNGGOL SECONDARY SCHOOL

ACHIEVERS WITH CHARACTER

SCHOOL EXPECTATIONS



PUNGGOL SECONDARY SCHOOL
ACHIEVERS WITH CHARACTER

DISCIPLINE

The school emphasises on values-driven holistic education for our students.

We are Fair and Consistent in our discipline approach and we educate our students to minimise occurrence of re-offence.

The school does not condone any form of bullying (including online spaces) and all bullying cases will be handled appropriately.

We support our students' social and emotional well-being, through counselling by our school counsellor, and support from the form teachers, Year Heads and other relevant staff.

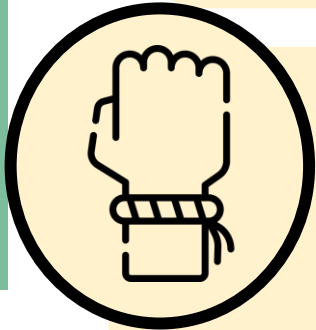


GROOMING



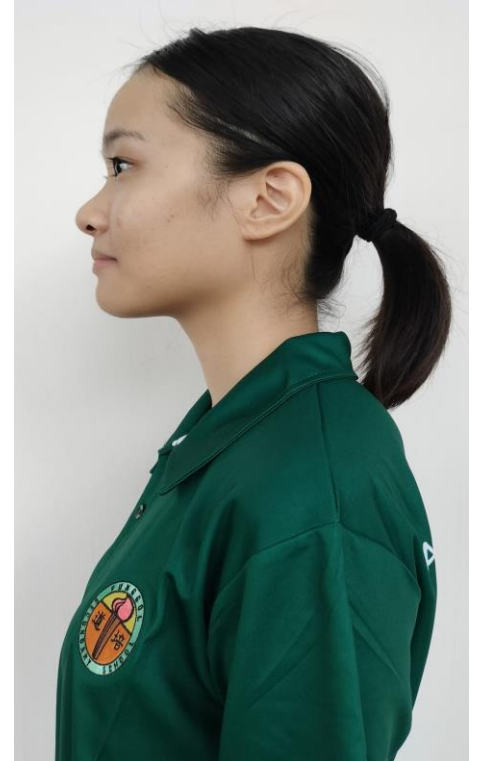
HAIR

- Reasonable hair length
- Natural style – no perms
- Natural hair colour only / no perms
- Tying up of hair (for girls with hair longer than shoulder length.)



ACCESSORIES

- Girls – One pair of **ear studs**
- No ear studs / earrings for boys
- No accessories on wrists, neck etc.
- No nail polish, coloured contact lenses



GROOMING STANDARDS



ATTIRE

- **School Uniform:**

Mon: School Polo-tee & school pants/ skirts

Tues – Fri: Polo-tee or school T-shirt & school pants/ skirts.

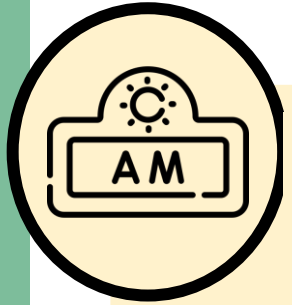
- **PE attire**

School T-shirt & school PE shorts

- Polo-tee or school T-shirt must be tucked in at all times.
- School PE shorts must be worn during PE lessons.

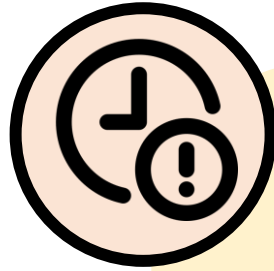


ATTENDANCE and LATE-COMING



MORNING ATTENDANCE

- Form Teachers will mark attendance during morning assembly at 7.30am / 9.00am.
- An automated SMS will be sent to the parent's mobile at about 8am if students are not marked present.



LATE COMING

- Students will be considered late if they are not ready for assembly with their class by 7.30am (Mon-Thurs)/ 9.00 am (Friday).
- Students who are late will have their handphones confiscated.
- Students are required to serve detention for third late-coming offence onwards.



ABSENCE FROM SCHOOL



ABSENCES

- Absences must be supported by a medical certificate or other valid documents.
- Only 2 Parents' Letter with a valid reason will be accepted per semester (including absence from CCA).
- For Weighted Assessments or examinations, students must provide a medical certificate for his/her absence. Parents' letter will **not** be accepted.



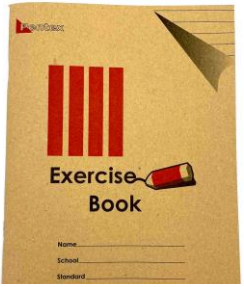
HOMework SUBMISSION



- Students are encouraged to get their own homework diary or notebooks to take note of their homework or assignments.
- Students can also key it into their calendars on their Personal Learning Devices (PLDs).

When a student neglects to submit / bring homework:

1. Teachers will note down incident in e-Student Management Record.
2. Students will be issued a warning (first incident) and then demerit point (subsequent incidences).
3. Student are to complete work within a stipulated time frame OR after school.
4. Parents will be engaged to help students manage their workload.



HANDPHONE USAGE

- Students are **not** allowed to use their handphones during the entire curriculum time. They can only use it **after** their last time-tabled lesson.
- If students choose to bring their handphones to school, they are to keep them in the handphone lockers in their classrooms.
- Students who are caught in possession of their handphones during curriculum time will have their handphones **confiscated**.
- Students can only collect their handphones after serving a 30-minute detention after the end of their last lesson.



SAFETY

- For the safety of our students, parents are reminded to drop their child off outside the school gate.
- However, parents can drive their child into the school during wet weather.



1A INDIVIDUALISED TIMETABLE Odd Week

Punggol Secondary School, Singapore

Angkor Secondary School, Singapore																									
	1	2	3	4	5	6	7	8	9	10	11	12	13	14	15	16	17	18	19	20	21	22	23	24	25
	8:00 - 8:20	8:20 - 8:40	8:40 - 9:00	9:00 - 9:20	9:20 - 9:40	9:40 - 10:00	10:00 - 10:20	10:20 - 10:40	10:40 - 11:00	11:00 - 11:20	11:20 - 11:40	11:40 - 12:00	12:00 - 12:20	12:20 - 12:40	12:40 - 13:00	13:00 - 13:20	13:20 - 13:40	13:40 - 14:00	14:00 - 14:20	14:20 - 14:40	14:40 - 15:00	15:00 - 15:20	15:20 - 15:40	15:40 - 16:00	16:00 - 16:20
Mo	CCE Gerald Foo / Masrurah			Tee Bei Si / Chen Xinghui Julaiha / Junaidah / Mdm Mani Lim Yong Kiong / Lua Yik Pin Moo Sheau Yuan / Shian Pui Kuen / Yogeswari / Naqiah Koon Yeow / Esther Lye Sabrina / Srividya				Break 1A	Chen Xinghui / Koon Yeow Naqiah / Julia / Junaidah Mdm Mani / Lim Yong Kiong Lua Yik Pin / Moo Sheau Yuan Shian Pui Kuen / Tee Bei Si Yogeswari				Break 1A	Science Agnes			E1-03 EL Jill Yong								
Tu	YH Time Gerald Foo Masrurah	E1-03 Lit Rina / Jill Yong			Break 1A	PE1 Joel Wei			Tee Bei Si / Koon Yeow / Naqiah Chen Xinghui Julaiha / Junaidah Mdm Mani / Lim Yong Kiong / Moo Sheau Yuan / Lua Yik Pin / Shian Pui Kuen / Yogeswari Esther Lye Sabrina / Srividya		Art Raihana			Break 1A		E1-03 Science Agnes									
We	Workshop 1, Workshop 2 D&T Sultan Shaheed / Lee Kah Gek			Break 1A	E1-03 Math Ho Wei Ling / Eddie			Break 1A	E1-03 EL Jill Yong			E1-03 Geo Rosmiyati													
Th	Music Room Mu Royce Teo			Break 1A	E1-03 EL Jill Yong			E1-03 History Sindhya		E1-03 Science Agnes			Break 1A		E1-03 Math Ho Wei Ling / Eddie										
Fr				FT Time Masrurah Gerald Foo	E1-03 Math Ho Wei Ling Eddie		FCE Kala / Jessica See		PE1 Joel Wei		CCE Gerald Foo / Masrurah														

Timetable generated: 3/1/2025

aSc Timetables



PUNGGOL SECONDARY SCHOOL

ACHIEVERS WITH CHARACTER

1A INDIVIDUALISED TIMETABLE

Even Week

Punggol Secondary School, Singapore

	1	2	3	4	5	6	7	8	9	10	11	12	13	14	15	16	17	18	19	20	21	22	23	24	25									
	8:00 - 8:20	8:20 - 8:40	8:40 - 9:00	9:00 - 9:20	9:20 - 9:40	9:40 - 10:00	10:00 - 10:20	10:20 - 10:40	10:40 - 11:00	11:00 - 11:20	11:20 - 11:40	11:40 - 12:00	12:00 - 12:20	12:20 - 12:40	12:40 - 13:00	13:00 - 13:20	13:20 - 13:40	13:40 - 14:00	14:00 - 14:20	14:20 - 14:40	14:40 - 15:00	15:00 - 15:20	15:20 - 15:40	15:40 - 16:00	16:00 - 16:20									
Mo	CCE			E1-03				Break	Tee Bei Si / Koon Yeow Chen Xinghui / Zulaiha Junaidah / Mdm Mani / Lim Yong Kiong / Lua Yik Pin Moo Sheau Yuan / Shian Pui Kuen / Yogeswari / Naqiah Esther Lye / Sabrina / Srividya				Break	Science			E1-03		PE1															
	Gerald Foo / Masrurah			Jill Yong				1A					1A	Agnes					Joel Wei															
Tu	YH Time	E1-03				Science		Art	Break	FCE				D&T	Break	Math		E1-03																
	Gerald Foo / Masrurah	Agnes						Raihana	1A	Kala / Jessica See				Sultan Shaheed / Lee Kah Gek	1A		Ho Wei Ling Eddie																	
We	PE1			Break		Math				E1-03		Geo	Mu		Science		Break	Lit		E1-03														
	Joel Wei			1A		Ho Wei Ling / Eddie						Rosmiyati	Royce Teo		Agnes		1A		Rina / Jill Yong															
Th	CCE			Tee Bei Si / Chen Xinghui / Zulaiha / Junaidah / Mdm Mani / Lua Yik Pin / Lim Yong Kiong / Moo Sheau Yuan / Shian Pui Kuen / Yogeswari / Koon Yeow / Naqiah / Esther Lye / Sabrina / Srividya			Break		Koon Yeow / Chen Xinghui / Zulaiha / Junaidah / Mdm Mani / Lua Yik Pin / Moo Sheau Yuan / Shian Pui Kuen / Tee Bei Si / Yogeswari / Naqiah		E1-03		History		Math		Break		EL				E1-03											
	Gerald Foo / Masrurah						1A				Sindhya				Ho Wei Ling / Eddie		1A		Jill Yong															
Fr				Debbie Teo / Jeslyn (Chem) / Eugene Neo / Jasmine Goh / Audrey Chua / Tan Shun Ann / Mabel Tan / Ng Shoon Chong / Masrurah / Siti Ezz / Ong Kai Zhenghong / Merlin Yeo / Sebastian Lee / Kelvin Lee / Lawrence Tang				HBL Math				HBL Math				HBL English				SIL														
					Boon Wee / Eddie / Tng Say Ping / Alex Tan / Chris Chong / MD / Eunice Ong / Gerald Foo / Ho Wei Ling / James Goh Jaseli / Tan Shu Kai Wei / Ong Wei Wei / Siti Ateka / Tang Chong Woei								Yogeswari / Chen Xinghui / Eng Siang Yong Esther Lye / Zulaiha / Junaidah / Mdm Mani / Lim Yong Kiong / Lua Yik Pin / Moo Sheau Yuan / Sabrina / Shian Pui Kuen / Srividya / Tan Shu Yi / Tee Bei Si / Wardi / Naqiah / Koon Yeow								Anju Babu / Siti Zulaiha / Benjamin Seethon / Jill Yong / Dexter Tan / Katherine Teoh / Lee Pei Hua / Lip Siin / Natalie Goh / Natasha Yow / Noor Hafizah / Rina / Jaclyn Siow													

Timetable generated: 3/1/2025

aSc Timetables



PUNGGOL SECONDARY SCHOOL

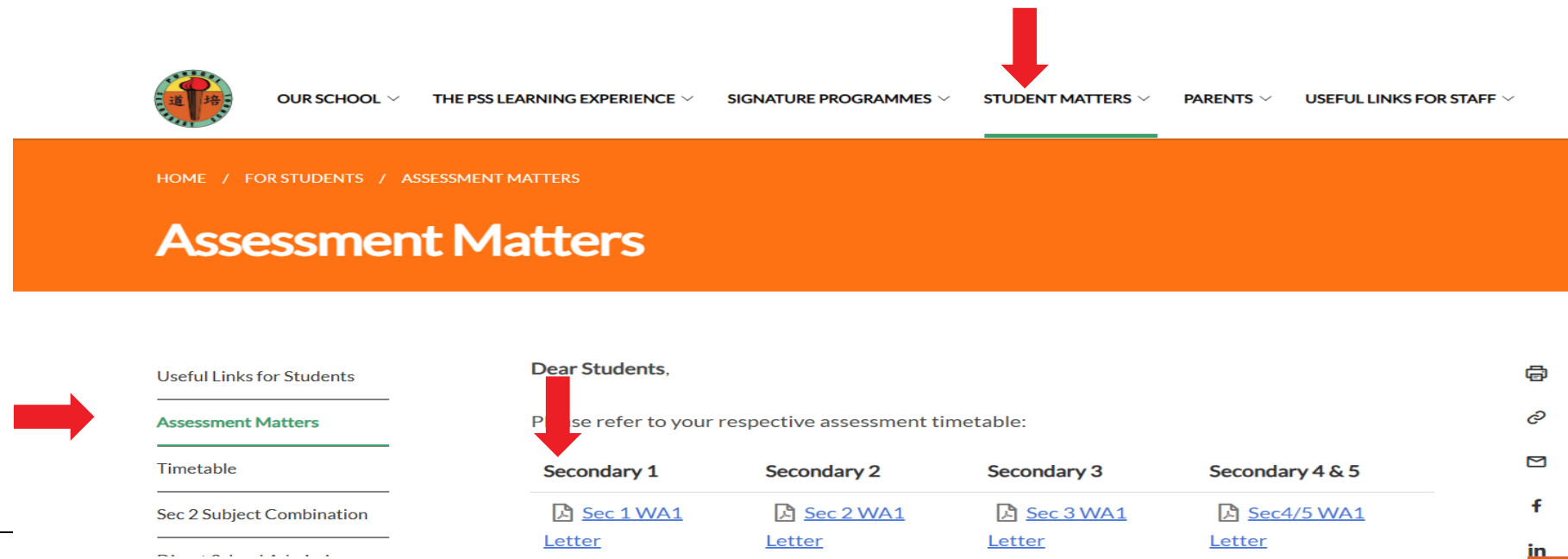
ACHIEVERS WITH CHARACTER

ASSESSMENT MATTERS

- One Weighted Assessment (WA) per term from Term 1 to 3
- End-of-year examination in Term 4
- Students will be tested based on the content that has been taught. Subject teachers will inform students on the content and date nearer to the WA/Exam.
- Parents will be informed via Parents Gateway on how to get access to exam timetables on the school website.

Allocation of percentage per semester:

WA1	15%
WA2	15%
WA3	15%
End-of-year Examination	55%



OUR SCHOOL ▾ THE PSS LEARNING EXPERIENCE ▾ SIGNATURE PROGRAMMES ▾ **STUDENT MATTERS ▾** PARENTS ▾ USEFUL LINKS FOR STAFF ▾

HOME / FOR STUDENTS / ASSESSMENT MATTERS





Assessment Matters

Useful Links for Students

- Assessment Matters**
- Timetable
- Sec 2 Subject Combination

Dear Students,

Please refer to your respective assessment timetable:

Secondary 1	Secondary 2	Secondary 3	Secondary 4 & 5
 Sec 1 WA1 Letter	 Sec 2 WA1 Letter	 Sec 3 WA1 Letter	 Sec4/5 WA1 Letter

PUNGGOL SECONDARY SCHOOL
ACHIEVERS WITH CHARACTER

ASSESSMENT MATTERS

- Alternative Assessments(AA) are modes of assessment that include journals, group projects, oral presentations, and individual performance tasks.
- Students are allocated a designated timeframe to prepare their Alternative Assessments and are required to meet a specific submission deadline.
- Only a medical certificate is accepted as a valid reason for absence from a weighted assessment/examination. Letters from parents are not accepted.
- For non-submission by deadline, students will be given ZERO marks.

Zero marks will be given for any form of dishonesty or exam malpractice.





CCA ALLOCATION & SELECTION



PUNGGOL SECONDARY SCHOOL

ACHIEVERS WITH CHARACTER

CCA ALLOCATION EXERCISE

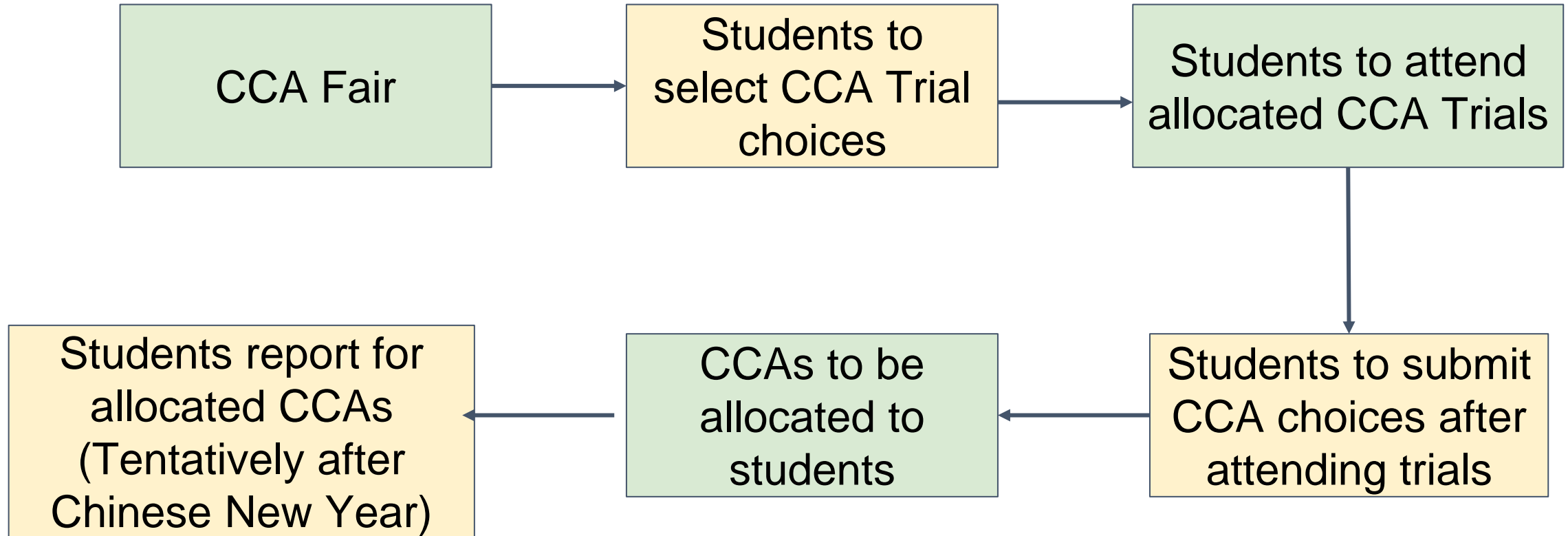
- CCA is an integral part of a student's holistic development.
- To help our new Secondary One cohort identify suitable CCAs, we have specifically arranged the following:
 - CCA briefing during the orientation
 - All Secondary One students had the opportunities to know more about the CCAs during the CCA Fair on 8 and 10 Jan.

OUR CCAs



CCA ALLOCATION EXERCISE

More information
will be shared on
PG and school
website.



Trials from Week 2 - 4

- CCA Trial Phase
- It is **compulsory** for Secondary 1 students to attend the CCAs which they have applied for trials for
- CCA venues and timings will be provided
- Via FormsSG

<https://form.gov.sg/677bab54f394560ffdbaf76>



FormSG is live. It will close by 12 January 2025.

5. Scan QR for Tutorial on how to use FORMSG to submit trial choices

<https://www.youtube.com/watch?v=UzlbObpc2vY>



SCHOOL- HOME PARTNERSHIP

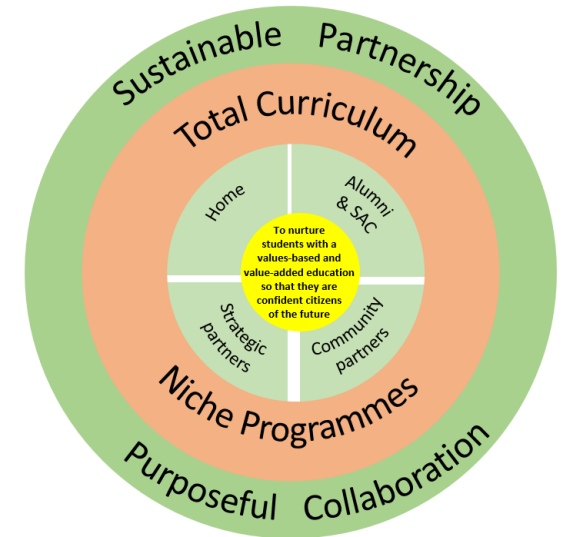


PUNGGOL SECONDARY SCHOOL
ACHIEVERS WITH CHARACTER



WHOLE SCHOOL APPROACH

- Parents are our key stakeholder.
- The school would want to partner the parents to build a nurturing environment to support the growth and holistic development of your child.
- We welcome your participation and involvement.



INAUGURAL PSS GIVES BACK!



PARTNERS'
CAREER
SHARING
SESSION



Research has shown that children whose parents are involved in their educational journey have been found to have **better self-esteem**, are **more self-disciplined**, show **positive attitudes**, and exhibit **higher aspirations** and **motivation** towards school.

Be an active partner in the education of your children.



PARENT SUPPORT GROUP

Why join the PSG?

- Gain better understanding of school policy, school activities and programmes
- Help your child cope better with school life
- Share parenting experience
- Build closer relationship with your family



What are the roles of the PSG?

- Provide inputs on school policies and goals, curriculum issues, programmes, student performance and conduct.
- Provides a channel for parents to raise issues and concerns, seek clarifications and provide constructive feedback.
- Parents can opt for greater involvement in the school.

How Parents can volunteer?

- Support school activities: CCA, school events and programmes.
- Participate in school activities: CCA, school events and programmes.
- Act as resource person: talks & networking

**Join
us!**



<https://go.gov.sg/psspg-appform>

PUNGGOL SECONDARY SCHOOL

ACHIEVERS WITH CHARACTER



POSITIVE PARENTING PROGRAMME PRESENTATION BY CARE CORNER