

Sec 2NA Parent Engagement Session (30 Mar 2023)



PUNGGOL SECONDARY SCHOOL
ACHIEVERS WITH CHARACTER



Agenda

Time	Programme
6.30 pm – 7.15 pm	Opening address by Vice-Principal Overview of subject combination by Assistant Year Head
7.15 pm – 7.30 pm	Question & Answer Segment



Opening Address by Vice-Principal, Mr Vincent Lee

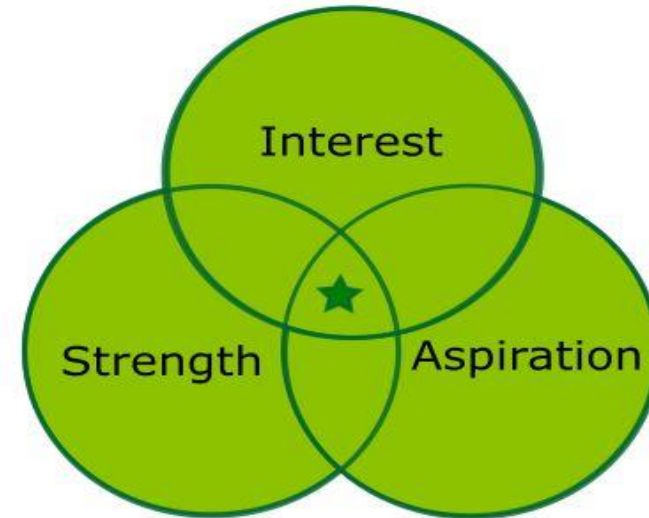


GENERAL GUIDELINES

In guiding your child to select a suitable subject combination, please consider:

YOUR CHILD'S INTERESTS, STRENGTHS AND ASPIRATIONS

YOUR CHILD'S ABILITY TO COPE WITH THE DEMAND OF THE SUBJECT



YOUR CHILD'S INTERESTS, STRENGTHS AND ASPIRATIONS

- Evaluate your child's strengths and weaknesses to decide on the subject combination. Knowing the weaknesses can prevent your child from taking a subject that he/she may end up struggling with.
- Choosing a subject your child is strong in can help him/her further develop his/her skills and interests in the subject. This can also help your child to decide on the best combination for him/her to score well in the national examination.



YOUR CHILD'S ABILITY TO COPE WITH THE DEMAND OF THE SUBJECT COMBINATION

- Taking current results into consideration to help you distinguish which subjects your child is better at.
- This can indicate which subject your child is more inclined towards



Post-Secondary Pathways



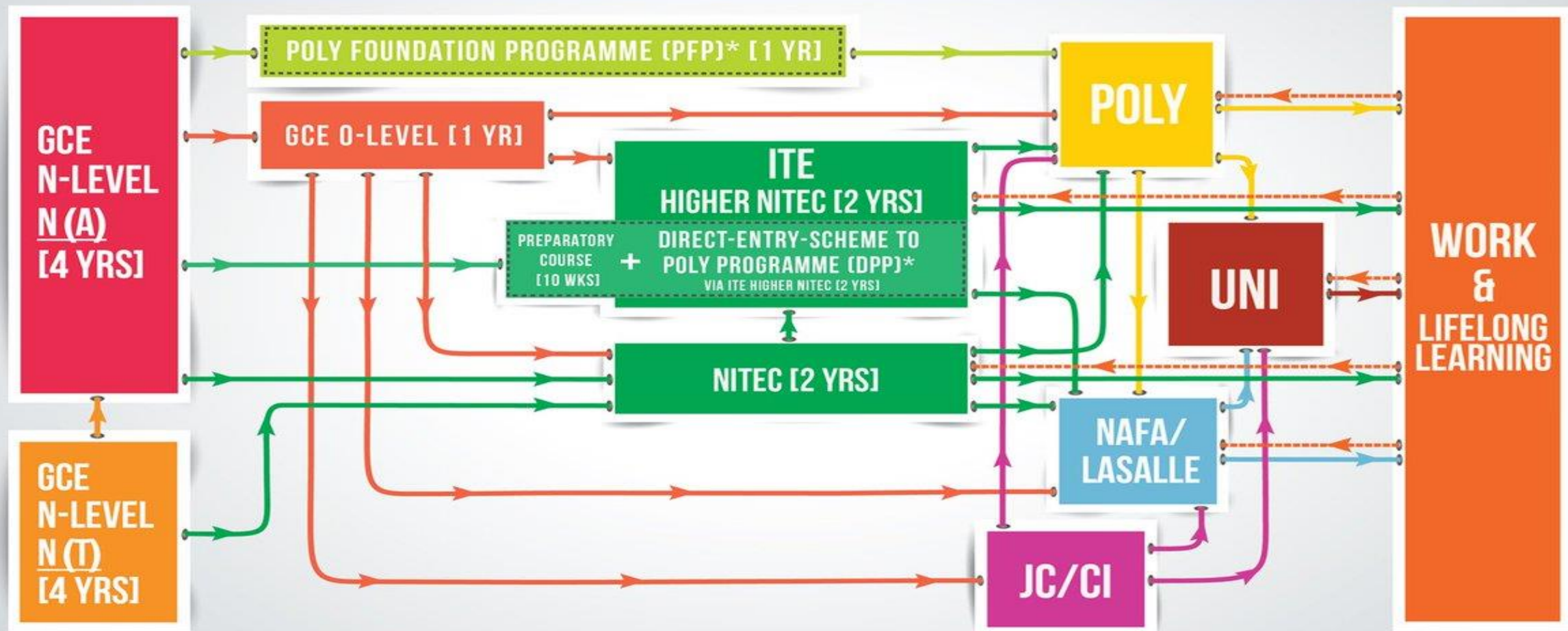
PUNGGOL SECONDARY SCHOOL
ACHIEVERS WITH CHARACTER

POST-SEC PATHWAY FOR 4NA





MULTIPLE PATHWAYS FOR N(A) AND N(T) STUDENTS



***For more information on DPP and PFP, please visit these websites:**

- Direct-Entry-Scheme to Poly Programme (DPP)
www.ite.edu.sg/wps/portal/definitely-des

- Poly Foundation Programme (PFP)
pfp.polytechnic.edu.sg



Ministry of Education
SINGAPORE

PFP Introduction

- The Polytechnic Foundation Programme (PFP) is a one-year programme that offers a practice-oriented curriculum taught by polytechnic lecturers, to better prepare polytechnic-bound N(A) students for entry into the relevant Polytechnic Diploma courses. This is an alternative to the Sec 5 year.
- PFP students are given provisional places in diploma programmes, subject to them passing all modules in the one-year PFP. The requirement to pass all modules ensures that students continue to work hard during their PFP year and are well prepared for polytechnic studies. Students who apply effort should have no difficulties in meeting the requirement.
- The PFP caters to students of the Sec 4N(A) cohort in the preceding year. The PFP will have about 1,500 places set aside each year. It will be offered by all five Polytechnics. More than 80% of Polytechnic Diploma courses will be offered under the PFP.





To meet the PFP criteria

Using N-Level results – Polytechnic Foundation Programme (PFP)

Who should apply: Students who are among the **top 10% of the Sec 4 N(A) cohort** and who wish to enter a polytechnic.

Application: Eligible N(A) students **will be invited to apply** for the polytechnic Diploma courses of their choice **after** the release of their N-Level results.

New: Relax of two 'Best' subject grades, NA Grade 4 (or Exp E8) for admissions to PFP from the Academic Year (AY) 2024 intake to allow access for polytechnic-bound N(A) students.

To qualify:

ELMAB3 \leq 12

at N-Level (excluding CCA bonus points),

AND

$EL \leq 3$ and $MA \leq 3$

- Applied Sciences
- Engineering
- Health Sciences
- Information & Digital Technologies
- Business Management
- Built Environment
- Media & Design
- Maritime Studies

$EL \leq 2$ and $MA \leq 3$

- Business Management
- Media & Design
- Humanities
- Health Sciences

DPP Introduction

- For students who have performed well in the GCE 'N' (Academic) Level examination and who would like to benefit from a more hands-on preparation at ITE, you may first enrol in a *Higher Nitec* course at ITE.
- You will subsequently be **assured** of either a place in a related Polytechnic Diploma course, provided you achieve the qualifying Grade Point Average (GPA) score in your *Higher Nitec* course.
- Upon release of the GCE 'N(A)' Level results, Secondary 4 'N(A)' students may apply for the Direct-Entry-Scheme to Polytechnic Programme (DPP) based on their GCE 'N(A)' Level final examination results and school-based 'O'-Level preliminary examination results (if applicable). Students can also combine their GCE 'N(A)' and school-based 'O'-Level preliminary examination results to apply for the DPP.





To meet the DPP criteria

- ELMAB3 \leq **19 points** (excluding CCA bonus point(s))
- Met the following course-specific entry requirements

**Higher Nitec
(DPP)**

For Applied Sciences, Engineering and Info-Communications Technology courses:

GCE N-Level subjects	Minimum Required Grades
English Language Syllabus A	4
Mathematics (Syllabus A/ Additional)	4
Any three other subjects excluding CCA	5

For Business & Services courses:

GCE N-Level subjects	Minimum Required Grades
English Language Syllabus A	3
Mathematics (Syllabus A/ Additional)	4
Any three other subjects excluding CCA	5



What is the difference between DPP & 5NA?

	DPP	5NA
Time before being eligible for poly	2 years	1 year
Learning experience	More hands-on (ITE programme)	More academic (O level curriculum)
Advantages	<ul style="list-style-type: none">- Assured of a place in related poly Diploma course, if they attain qualifying GPA scores	<ul style="list-style-type: none">- Pursue A-Levels- Potentially can obtain a Poly Diploma in 4 years
Considerations	<ul style="list-style-type: none">- 2 yrs Higher Nitec course- Either 2 or 3 years to complete Poly	<ul style="list-style-type: none">- O Level results must meet the poly Diploma course's cut-off points



New 3-Year *Higher Nitec*

From Academic Year 2022, the 3 year Higher Nitec streamlined the current *Nitec* & *Higher Nitec* curricula, this new option will allow students to attain a *Higher Nitec* qualification directly, in only three years instead of the current four years. Apply using the existing *Nitec* entry requirements.

11 Higher Nitec Courses in 2023

- AI Applications
- Immersive Applications and Games
- Data Engineering
- Accounting
- Business Information Systems
- Cyber & Network Security
- Electronics Engineering
- IT Application Development
- IT Systems & Networks
- Security System Integration
- Sport Management



Traineeship

Eligibility: Meet **minimum entry requirements** for the course applied

Duration: Ranges from **1 to 2 years**

Interviews: Required for **all courses**

Choices: Up to a **maximum of 6**

- Two components: Off-the-job & on-the-job training
- Full sponsorship of training fees, with staff benefits and salary
- Must **complete course within given duration** to the **satisfaction of the sponsoring company**



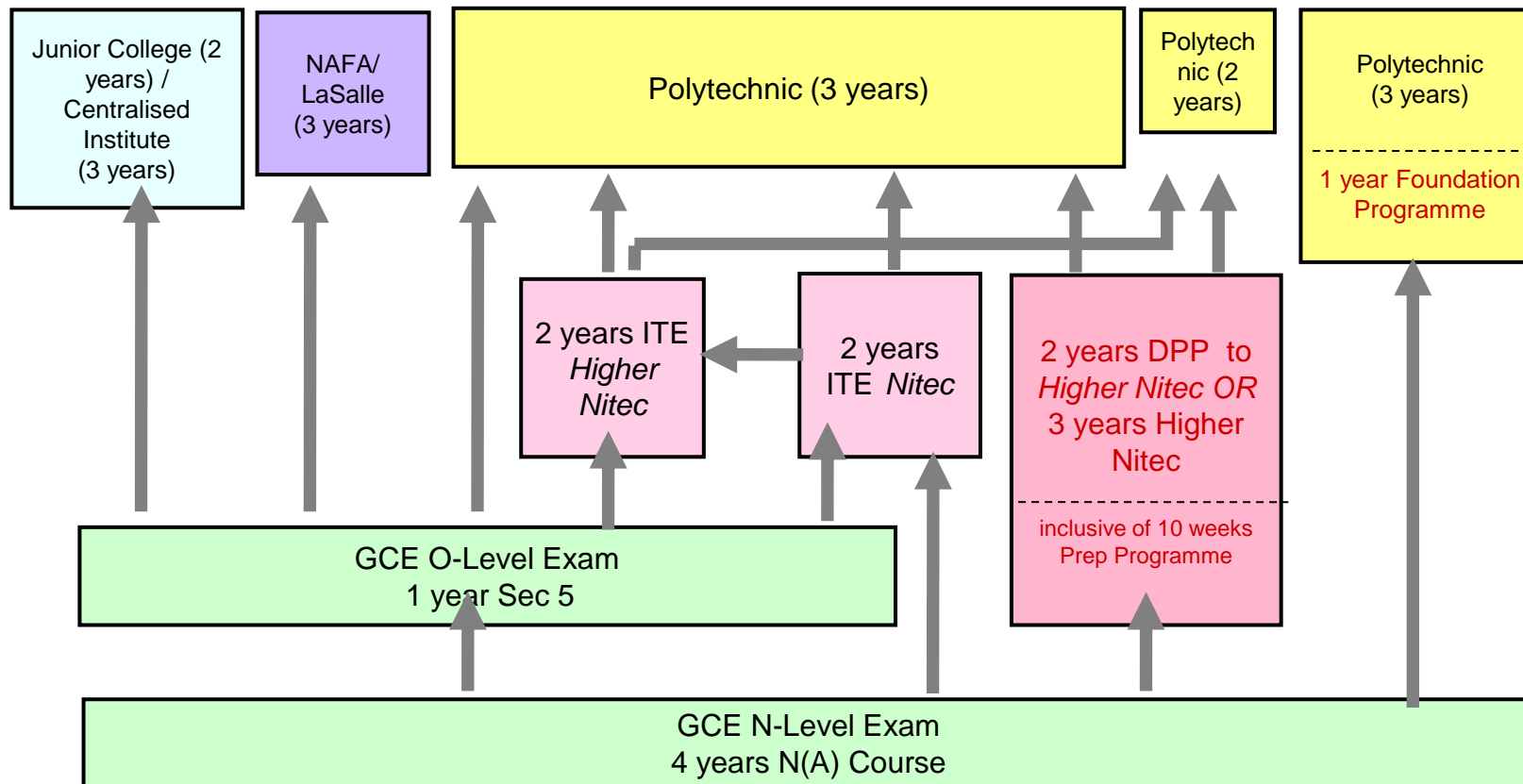
Course	Course Code	Off-The-Job Training Location Code	Minimum Entry Requirements	Indicative Starting Salary for Training (\$)
Business Services	NABSZ	CC-AM CE-SM CW-CK	3 GCE 'N' Passes (Grade A-D or Grade 1-5) in English Language and two other subjects Or 2 GCE 'O' Grades (Grade 1-8) in any two subjects	1,100 - 1,400





Overview of Pathways

Pathways for Normal (Academic) Students



PUNGGOL SECONDARY SCHOOL

ACHIEVERS WITH CHARACTER



Possible Scenarios

2024	2025	2026	2027
3NA	4NA	5NA	JC/Poly/ITE

2024	2025	2026	2027
3NA	4NA	PFP (1 st yr)	Poly

2024	2025	2026	2027	2028
3NA	4NA	Hi-Nitec	Hi-Nitec	Poly (ITE Dip)

2024	2025	2026	2027	2028	2029
3NA	4NA	Hi-Nitec	Hi-Nitec	Hi-Nitec	Poly (ITE Dip)

2024	2025	2026	2027	2028	2029
3NA	4NA	Nitec	Nitec	Hi-Nitec	Hi-Nitec

Students who aspire to go to Poly or JC through Sec 5N, need to start laying a strong foundation from Sec 3 itself, so as to get into the course of their choice, in the shortest duration.

Subject-Based Banding



PUNGGOL SECONDARY SCHOOL
ACHIEVERS WITH CHARACTER

SUBJECT BASED BANDING

- Students who do well for the Normal (Academic) Subjects will be offered to take the subject at a higher level.
- Students will need to have scored at least 75% for the subject and be recommended by the teacher to offer the subject at a higher level
- SBB Support Programme



Conversion from 'O' Level to N(A)-equivalent Grade

This offer for Subject-Based Banding will enable your child/ward to learn more and offer the subject at a level more suitable for his/her abilities. Additionally, the grades obtained at 'O' level will be converted to an N(A)-equivalent grade, based on the below:

'O' level	'N(A)' level
A1-B3	1
B4-C6	2
D7	3
E8	4
F9	5





How do I make my choice?

The subjects requirements



PUNGGOL SECONDARY SCHOOL
ACHIEVERS WITH CHARACTER

Sec 3 Normal Academic Subject Combination

	English Language			
	Mother Tongue / Higher Mother Tongue			
	Elementary Mathematics			
	Combined Humanities (Social Studies, History) OR Combined Humanities (Social Studies, Geography)			
	Combined Science (Chemistry, Physics)			
	Principle of Accounts	Additional Mathematics	Craft & Tech	Literature
No of Subjects	6	6	6	6



Subjects Criteria (Normal Academic)

Sec 3 Subjects	Sec 2 Academic Performance	Overall %
Pure Literature	English Literature (NA) & English Language (NA)	≥60 ≥60
Additional Mathematics (NA)	Mathematics (students will also take Express Math)	≥75
Principle of Accounts	Mathematics English Language	≥60 ≥50
Art	Art	≥60
F&N	FCE	≥60
D&T	D&T	≥60



SUBJECT PERCENTILE MARKS

Sample for End Year Exam marks

SUBJECT	[SECOND COMBINED]		
	SA2		
	Mark	Grade	Pctl
ENGLISH LANGUAGE	57	C5	60-80
CHINESE	56	C5	20-40
MATHEMATICS	48	D7	60-80
SCIENCE (PHY, CHEM)	53	C6	60-80
HISTORY	57	C5	20-40
HUMANITIES (SS, GEOGRAPHY)	45	D7	40-60
FOOD & NUTRITION	47	D7	0-20

Marks obtained for English is 57 as shown in result slip

The corresponding percentile range is 60-80

- Take note of the percentile range that your child is in for each subject.
- In the above example, the child's English Language percentile range of 60-80 means that this child's score is equal to or better than that of 60% of the cohort for the subject.



Coursework (C & T)

D&T	NFS	Art
<p>Focuses on research to define user needs, exploration and develop design solutions, prototyping their ideas using tools/equipment/machines. Cultivating creative, critical and reflective thinking.</p> <p>Paper 1 - 40% Paper 2 - 60% Design Process Journal(70 pages) (research on real world problem, inquiry, idea conceptualization and development, planning and monitoring; 3D drawings)</p> <p>Artifact (realization, materials & practical processes)</p> <p>2 Presentation boards to communicate the solution for identified design problem</p>	<p>Demonstrate principles of nutrition and scientific principles underlying food preparation, processing and safety.</p> <p>Paper 1 (Written paper) - 40% Paper 2 (Coursework) - 60% 20-page report on a given question and do an experiment then cook 3 dishes related to the task.</p>	<p>Focuses on advanced art techniques (Niche mediums), Art movements and inspirations. Developing student's independent discovery and concept development.</p> <p>Paper 1(Coursework) - 60% O/N Level paper distributed in January Submission dates (tentative): <i>August (O Level)</i> Art work can be 2D (painting), 3D (sculpture) or Digital (photography/videography) Includes Preparatory Work of 5 Boards and Final Artwork</p> <p>Paper 2 (Drawing & Painting) - 40% Includes Preparatory Work of 5 A3 size paper and Final drawing and painting.</p>



Elective Geography vs Elective History

<u>Geography (50%)</u>	<u>History (50%)</u>
<ul style="list-style-type: none"> Cluster 1 - Geography in Everyday Life Cluster 2 - Tourism Cluster 3 - Climate <p>Studying data, graphs, photographs, maps and drawing conclusions.</p> <p>Essay writing to form judgement and evaluation.</p>	<p>End of World War 1 (1919) to End of Cold War (1991)</p> <p>Source Based Case study that test critical thinking skills</p> <p>Essay Question that tests constructing explanation.</p>
<p><u>Social Studies (50%) (Compulsory)</u></p> <ul style="list-style-type: none"> Theme 1 - Exploring Citizenship Theme 2 - Living in a Diverse Society Theme 3 - Being part of a Globalised World 	

Suggestion: Get your child to browse through Sec 3 History and Geography textbooks.
This will give them an idea what they will be studying in Sec 3 and what interests them.



N(A)- Level Additional Mathematics Syllabus

Concepts & Skills		
Algebra	Geometry & Trigonometry	Calculus
Mathematical Processes		

Aims of the syllabus:

acquire mathematical concepts and skills for higher studies in mathematics and to support learning in the other subjects, with emphasis in the sciences, but not limited to the sciences;

develop thinking, reasoning, communication, application and metacognitive skills through a mathematical approach to problem-solving;

connect ideas within mathematics and between mathematics and the sciences through applications of mathematics; and

appreciate the abstract nature and power of mathematics.



N(A)- Level Additional Mathematics Syllabus

- NA students who opt to take A Maths would be required to take O Level E Math as well.

Paper	Duration	Description	Marks	Weighting
Paper 1	1 hour 45 minutes	There will be 13–15 questions of varying marks and lengths. Candidates are required to answer ALL questions.	70	50%
Paper 2	1 hour 45 minutes	There will be 8–10 questions of varying marks and lengths. Candidates are required to answer ALL questions.	70	50%



Principles of Account

Aims of Syllabus:

- Apply double entry system of recording business transactions.
- Synthesis and presentation skills in the preparation of accounting information in a suitable form.
- Analytical skill in interpreting financial statements and analysing the effects of business transactions and accounting adjustments on financial statements
- Evaluative skill in evaluating businesses for their profitability, liquidity and efficiency of inventory and trade receivables management using financial information and ratios
- Decision-making skill in evaluating choices using both accounting and non-accounting information.



Assessment:

	Details	Weighting	Duration
Paper 1	Answer 3 to 4 compulsory structured questions. (40 marks)	40%	1 hour
Paper 2	<p>Answer 4 compulsory structured questions. (60 marks)</p> <ul style="list-style-type: none">• One question requires the preparation of financial statements for a business for one financial year. (20 marks)• A scenario-based question (5 marks) will be part of one of the 3 remaining questions.	60%	2 hours



Literature in English

- **Some aims of Literature:**

- promote the appreciation of multiple perspectives
- sensitise students to artistic decisions made by writers
- equip students with the skills to convince others of their interpretation, based on sound reasoning with evidence

(more info can be found in syllabus document on SEAB website)

- **Assessment:**

- Paper 1: Prose and Unseen Poetry. Duration: 1 hr 40 min (50%).

Students will answer one question from each section.

Texts used: *How We Live Now (a collection of short stories)* with a wide range of poems

- Paper 2: Drama. Duration: 1 hr 30 min (50%).

Students will answer one compulsory passage-based question and one essay question.

Text used: *The Crucible*

Essay questions usually focus on feelings / impressions of the characters and effect of words and images in a text.

Example: In *What They're Doing Here* (by Yu-Mei Balasingamchow), what makes you sympathise with Atiqah?



ONLINE SUBMISSION

List of Subject Combinations will be available on the website.

Please note that your child/ward is to submit his/her Subject Combination Option Form (Online) through the following subject streaming website :

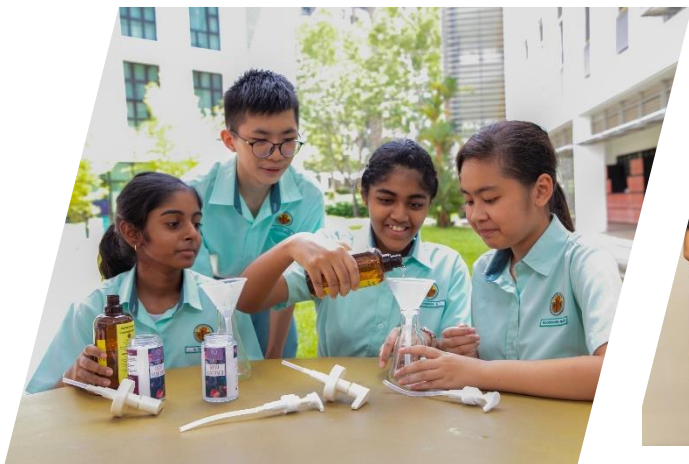
<https://punggol.schoolhub.sg/>

If your child/ward have any problems with the login, please email jonathan@rjcat.com with the following info:

1. School:
2. Class:
3. Name:
4. Username:
5. Password:

**Mock Streaming
Exercise
Term 2 Week 10**





FAQs



PUNGGOL SECONDARY SCHOOL

ACHIEVERS WITH CHARACTER



FAQ

Q: What are the chances that my child/ward will be allocated the combination/elective subject that he/she wants to study in upper secondary?

A: The school uses the overall percentage to stream students into different classes. It is important that your child makes his/her choice based on his/her results and interest.

For the elective subjects, your child must have interest in the subjects he/she is choosing as well as meet the subject requirements.



How can I Support My Child?

Build Relationships

- a) Spend quality time to build relationships, do things together as a family
- b) Show care, love and support
- c) Share with your child your personal experiences

Take Interest:

- a) Take an interest in your child's life, friends, activities, school life
- b) Have regular chats (and not only on school work)

Reinforce good habits

- a) Use of digital devices
- b) Sleeping routines
- c) Read
- d) Help your child to grow and be self-directed learner: e.g.
 - i) How to make decisions
 - ii) How to set targets, review strategies, monitor progress, plan for improvement
 - iii) Set parameters

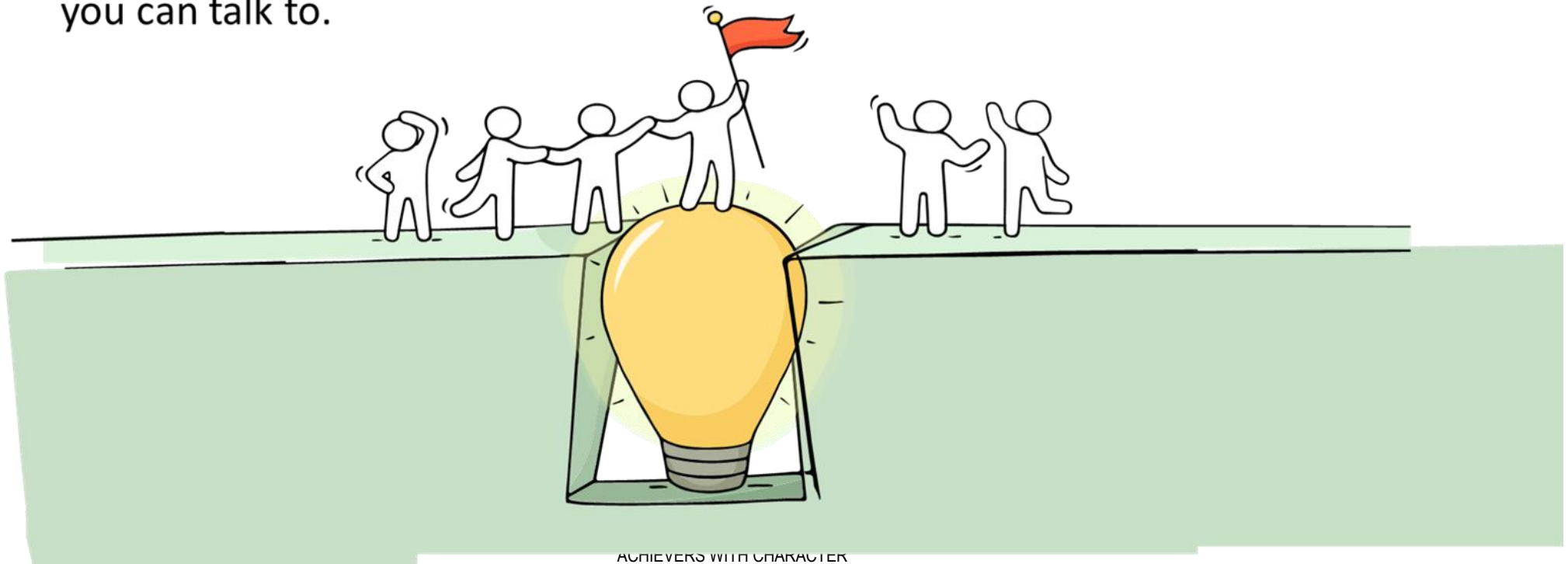
Make use of platforms for home-school communication



Reaching out for help is a sign of strength, not weakness.

*Is there
someone we
can speak with?*

If you have any concerns or are not coping, do reach out to someone you trust and speak with them. It could be a parent/guardian, teacher, School Counsellor or a friend that you can talk to.



“

Education & Career Guidance Counsellor

Ms Grace

”

Email: champion_grace@schools.gov.sg

ECG Appointment Booking
Form:

go.gov.sg/pssecg





PUNGGOL SECONDARY SCHOOL

ACHIEVERS WITH CHARACTER

thank
you