

Sec 2NT Parent Engagement Session (30 Mar 2023)



PUNGGOL SECONDARY SCHOOL
ACHIEVERS WITH CHARACTER



Agenda

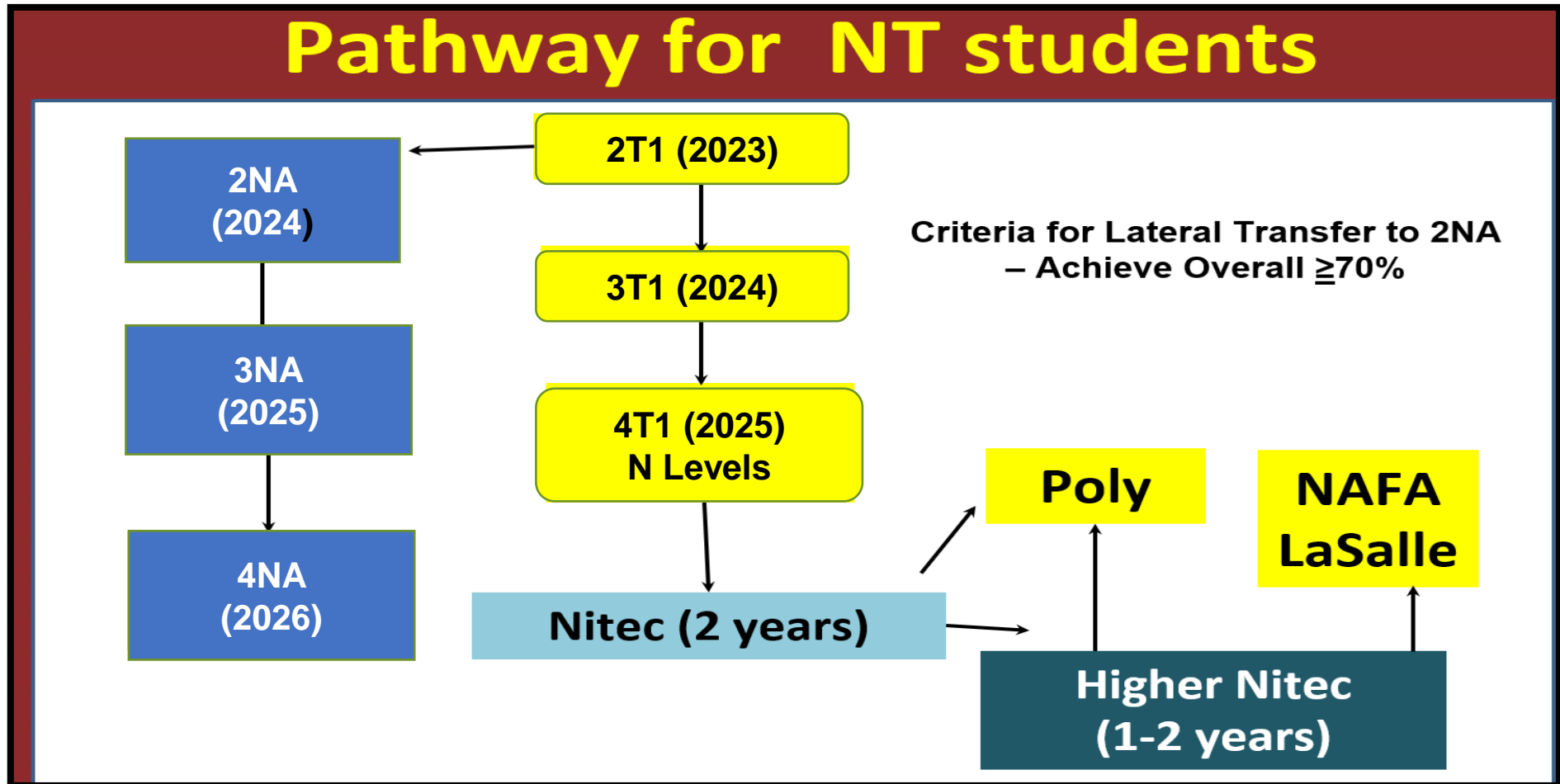
Time	Programme
6.30 pm – 7.15 pm	Opening address by the Vice-Principal Overview of subject combination
7.00 pm – 7.15 pm	Question & Answer Segment



Opening Address by Vice-Principal, Mr Anith



POST-SECONDARY OPTIONS



ADMISSION CRITERIA FOR ITE

- Different categories of *Nitec* courses come with different entry requirements ranging from **completed GCE 'N' Level to 3 GCE 'N' Level passes.**
- Admission is merit-based, and posting to a course is based on **aggregate of best 4 GCE 'N' Level subjects, including pre-requisite subjects and bonus points** where applicable and is subjected to availability of vacancies.
- Find out more about the Work-Study Diploma, Technical Diploma, *Higher Nitec*, *Nitec* and Traineeship courses offered by ITE: [ITE Prospectus](#)

SUBJECT INFORMATION

3 hrs per week

Mobile Robotics (MR)

Aims to provide students with the experience of developing their own mobile robots and equip them with basic knowledge and skills in electrical, electronics, mechanical design and intelligent control.

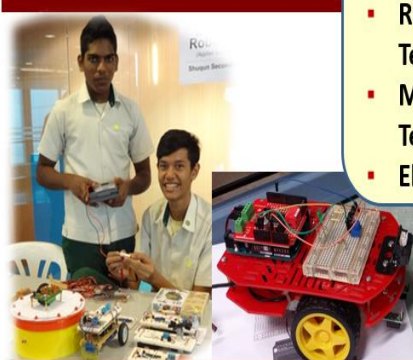
Related *Nitec* Courses

Electricity and Electronics



- Basic Electricity
- Basic and Digital Electronics

Robotics



- Mobile Robotics – Introduction
- Design
- Simple Mechanism
- Material and Practical Processes
- Integration

- Mechatronics
- Rapid Transit Technology
- Mechanical Technology
- Electronics

3 hrs per week

Elements of Business Skills (EBS)

Provides students with an understanding of business activities in the Travel and Tourism, Hospitality and Retail industries.

Graduating students will be equipped with the foundation for further studies at institutes of higher learning and become aware of the prospects and challenges of a career in the services sector.

Related *Nitec* Courses

- Business Services
- Travel & Tourism Services
- Financial Services
- Retail Services

Understanding Business Activities:

- Travel and Tourism
- Hospitality
- Retail

Customer Relations:

- Effective communicating
- Quality customer service

Basic Marketing:

- Knowing your customers
- Applying the Marketing Mix



EBS Learning Journey @ Resort World Sentosa



Sea Aquarium & Fine Dining Restaurant

FOR MORE INFO ON GCE N- LEVEL SUBJECT SYLLABUSES

[https://www.seab.gov.sg/home/examinations/gce-n\(t\)-level](https://www.seab.gov.sg/home/examinations/gce-n(t)-level)



Singapore Examinations and Assessment Board

SUBJECT COMBINATION

English Language
Basic Chinese / Malay / Tamil Language
Mathematics N(T)
Science N(T)
Computer Applications (CPA)
Elements of Business Skills (EBS), OR Mobile Robotics

GRADING SYSTEM FOR NT (FOR ENTRY TO NITEC COURSES)

Calculation of the Aggregate of BEST 4 GCE 'N' Level Subjects

N-Level Subject (NT Course)	
A	1 POINT
B	2 POINTS
C	3 POINTS
D	4 POINTS
U	5 POINTS

The combined points for the student's BEST 4 Subjects will be the aggregate score for that student shown in the table.

However there are also subject(s) that the student is required to pass in addition to fulfilling the aggregate score) where applicable.



EXAMPLE OF CUT-OFF POINTS FOR ITE

	Course	Cut Off
1	Applied Food Science	8
2	Nursing	12
3	Business Services	7
4	Video Production	9
5	Aerospace Avionics	7
6	Electrical Technology	11
7	Digital Animation	12
8	Hospitality Operations	8

STUDENTS TAKING SBB IN SEC 2

To continue to offer the higher-level subject at upper sec, students need to obtain at least 50% for the subject for OVERALL at the end of the year.

ONLINE SUBMISSION

List of Subject Combinations will be available on the website.

Please note that your child/ward is to submit his/her Subject Combination Option Form (Online) through the following subject streaming website :

<https://punggol.schoolhub.sg/>

If your child/ward have any problems with the login, please email jonathan@rjcat.com with the following info:

1. School:
2. Class:
3. Name:
4. Username:
5. Password:

**Mock Streaming Exercise
Term 2 Week 10**



How can I Support My Child?

1) Build Relationships

- a) Spend quality time to build relationships, do things together as a family
- b) Show care, love and support
- c) Share with your child your personal experiences

2) Take Interest

- a) Take an interest in your child's life, friends, activities, school life
- b) Have regular chats (and not only on school work)
- c) Prioritise - **EL, Math and Science**

3) Reinforce good habits

- a) Use of digital devices
- b) Sleeping routines
- c) Read
- d) Help your child to grow and be self-directed learner: e.g.
 - i) How to make decisions
 - ii) How to set targets, review strategies, monitor progress, plan for improvement

4) Check-in with FTs regularly



SUGGESTIONS TO SUPPORT YOUR CHILD'S LEARNING

- ✓ Take an interest in your child's learning, in both academic and non-academic areas.
- ✓ Share current affairs and discuss them with your child;
- ✓ Encourage good sleeping habits and appropriate use of hand phone;
- ✓ Encourage a useful hobby to distress;
- ✓ Attend school punctually

“

Education & Career Guidance Counsellor

Ms Grace

”

Email: champion_grace@schools.gov.sg

ECG Appointment Booking
Form:

go.gov.sg/pssecg

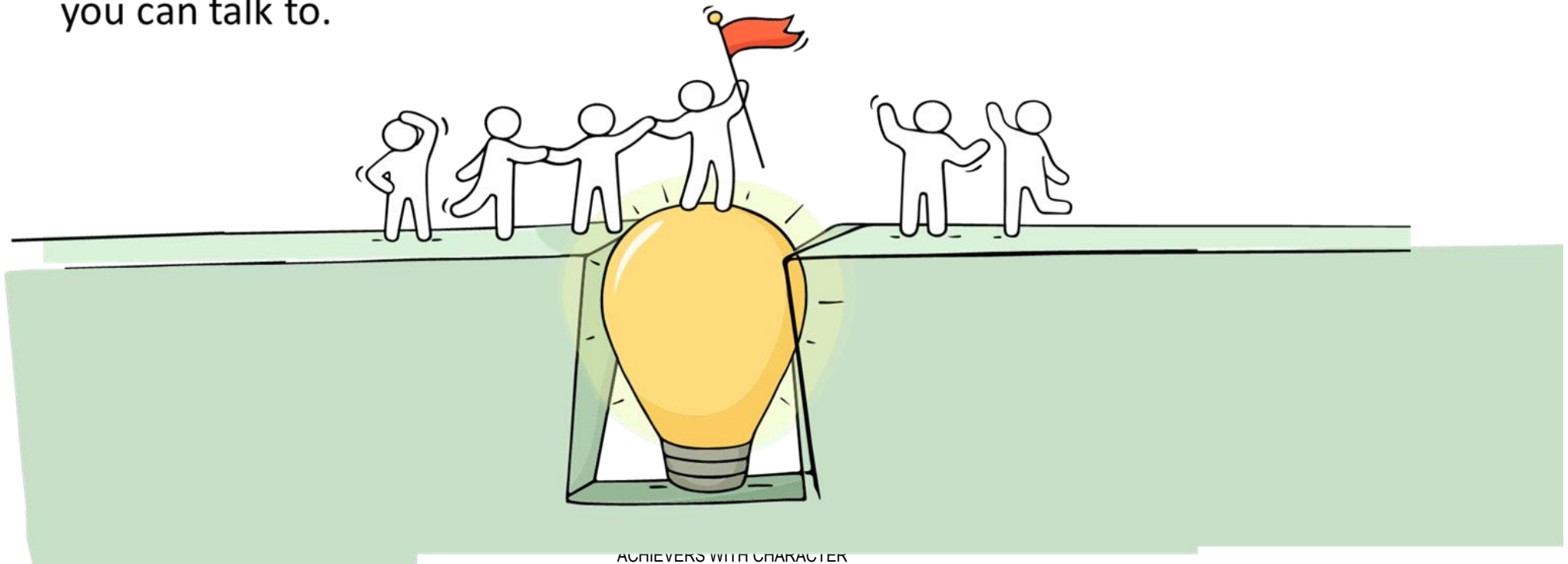




Reaching out for help is a sign of strength, not weakness.

*Is there
someone we
can speak with?*

If you have any concerns or are not coping, do reach out to someone you trust and speak with them. It could be a parent/guardian, teacher, School Counsellor or a friend that you can talk to.



THANK YOU!

