

Sec 4NT Parent Engagement Session (24 Mar 2023)



PUNGGOL SECONDARY SCHOOL
ACHIEVERS WITH CHARACTER



Agenda

Time	Programme
6.30 pm – 6.50 pm	<ul style="list-style-type: none">- Opening by Vice-Principal- Update on Sec 4 programmes and the strategies implemented to prepare students for their national exam
6.45 pm – 7.20 pm	<p>4 NT: IT Nitec & EAE Talk</p> <p>+ Q&A</p>



Post-Secondary Pathways

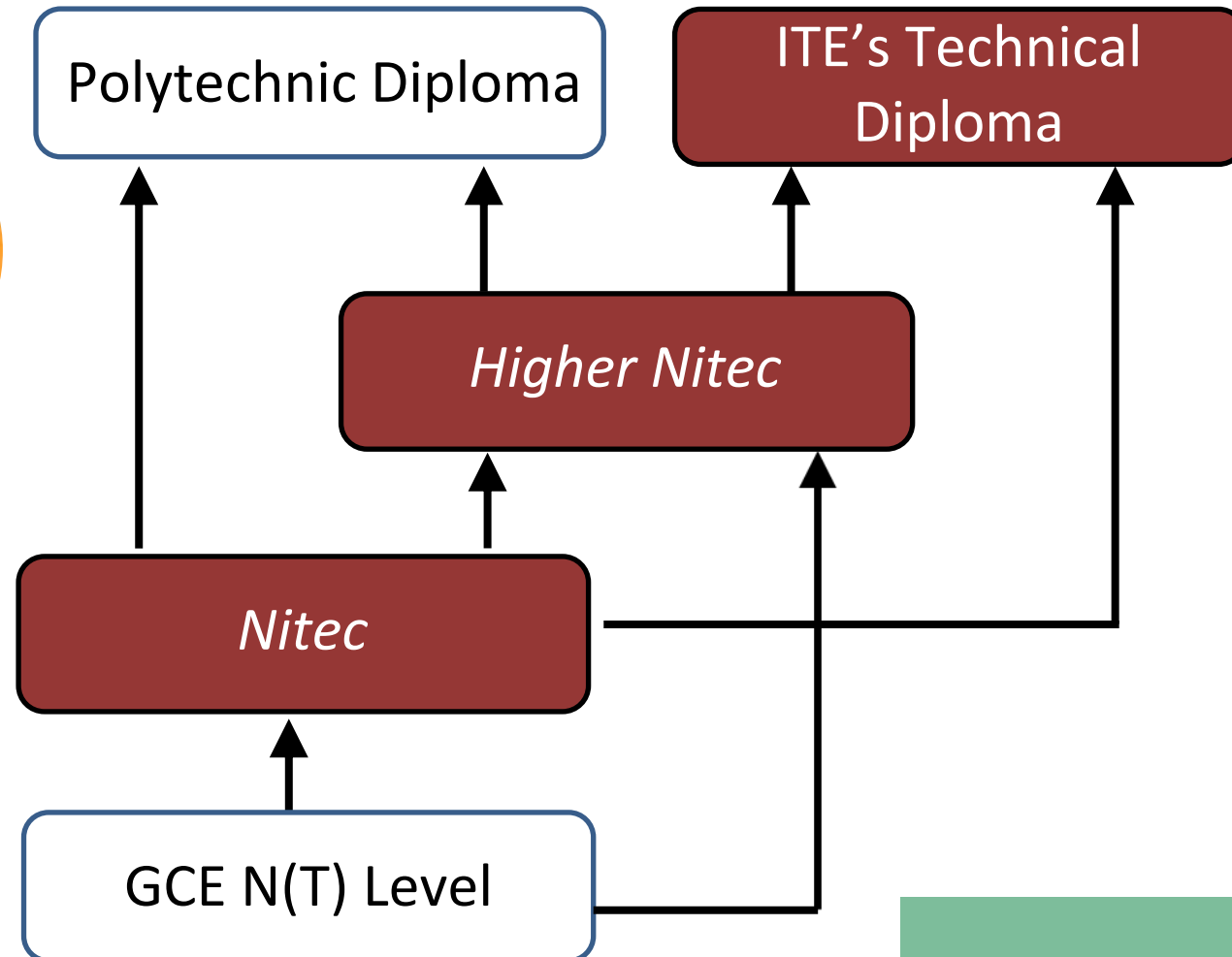


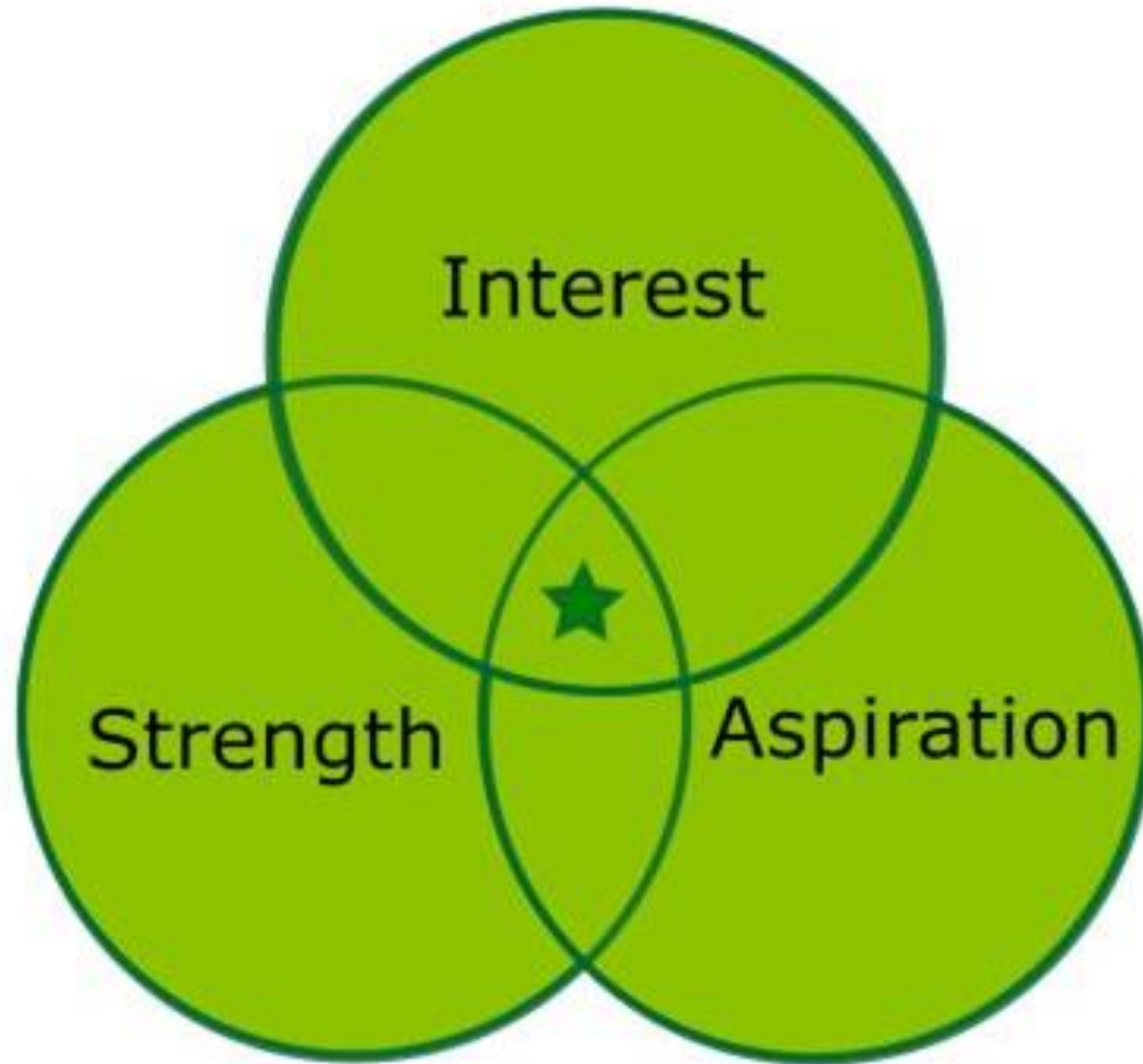
PUNGGOL SECONDARY SCHOOL
ACHIEVERS WITH CHARACTER

Pathways for NT students



Students may wish to enter the Working World at any point on this Education Map







N-Level students

Consider EAE based on strong interest to the course.

ITE Early Admission Exercise (EAE)

Aptitude-based admissions exercise that allows students to apply and receive conditional offers for admission to ITE before receiving their O-Level or N-Level results

End May - June	Application through ITE EAE portal
End June – End July	Interviews
End Aug	Offers & Acceptance
Sept	Withdrawal (to join main JIE)



Full-Time 2-Year Nitec Courses & Entry Requirements (2022 Intake)

2-Year Nitec Courses By School	Course Code	College Code	Minimum Entry Requirements
APPLIED & HEALTH SCIENCES			
Applied Food Science ①③	NFAFZ	CE-SM	3 GCE 'N' Passes (Grade A-D or Grade 1-5) in Mathematics or Science* and two other subjects Or 2 GCE 'O' Grades (Grade 1-8) in any two subjects
Chemical Process Technology ①③	NFCPZ	CE-SM	
Community Care & Social Services ②③ <i>In view of the nature of work in the community care and social services sectors, applicants should possess a caring attitude and a service-oriented mindset. Shortlisted applicants have to attend an interview and pass a prescribed medical examination.</i>	NFCSZ	CE-SM	
Opticianry ③ <i>In view of the nature of work in the eyecare industry, applicants should possess a caring attitude, a service-oriented mindset and good interpersonal skills. Psychomotor ability is also an important consideration. Shortlisted applicants have to attend an interview and aptitude test.</i>	NFOPZ	CE-SM	* Mobile Robotics and Smart Electrical Technology subjects can be used in lieu of Science for admission to these Nitec courses
Nursing ②③ <i>In view of the nature of work and demands in the healthcare industry, applicants should possess a caring attitude and a resilient mindset with good interpersonal skills. Shortlisted applicants have to attend an interview and pass a prescribed medical examination.</i>	NFNSZ	CE-SM	3 GCE 'N' Passes (Grade A-D or Grade 1-5) in English Language, Mathematics and one other subject Or 2 GCE 'O' Grades (Grade 1-8) in any two subjects



<u>2-Year Nitec Courses</u> By School	Course Code	College Code	Minimum Entry Requirements
BUSINESS & SERVICES			
Business Services ③	NFBSZ	CC-AM CE-SM CW-CK	3 GCE 'N' Passes (Grade A–D or Grade 1-5) in English Language and two other subjects Or 2 GCE 'O' Grades (Grade 1-8) in any two subjects
Floristry ③ <i>In view of the nature of work in the floristry industry, applicants should possess a creativity flair for floristry and a positive service attitude. Shortlisted applicants have to attend an interview and aptitude test.</i>	NFFLR	CC-AM	
Travel & Tourism Services ③ <i>Applicants should possess a service-oriented mindset and good communication skills. Shortlisted applicants have to attend an interview.</i>	NFTTZ	CW-CK	



Nitec to Higher Nitec

Table 2 - Eligibility Criteria For Admission To *Higher Nitec* Courses

ITE Course	Course Code	Offered By	Min GPA
			2 Years
<i>Higher Nitec</i> in Architectural Technology	HFATG	CC-AM	2.3
<i>Higher Nitec</i> in Automotive Engineering	HFAUE	CW-CK	2.3
<i>Higher Nitec</i> in Biotechnology	HFBTZ	CE-SM	2.3
<i>Higher Nitec</i> in Broadcast & Media Technology	HFBMZ	CC-AM	2.3
<i>Higher Nitec</i> in Business Information Systems	HFBIZ	CE-SM	2.3
<i>Higher Nitec</i> in Chemical Technology	HFCTZ	CE-SM	2.3
<i>Higher Nitec</i> in Civil & Structural Engineering Design	HFCSZ	CE-SM	2.3
<i>Higher Nitec</i> in Cyber & Network Security	HFCNZ	CC-AM CE-SM CW-CK	2.3
<i>Higher Nitec</i> in Data Engineering	HFDEG	CW-CK	2.3
<i>Higher Nitec</i> in Early Childhood Education	HFCHZ	CC-AM	2.8
<i>Higher Nitec</i> in Electrical Engineering	HFEEZ	CE-SM CW-CK	2.3
<i>Higher Nitec</i> in Electronics Engineering	HFECZ	CC-AM CE-SM CW-CK	2.3
<i>Higher Nitec</i> in Engineering with Business	HFEUZ	CC-AM	2.3



2-Year <i>Higher Nitec</i> DPP Course ^[2]	Mapped Polytechnic Courses for Articulation from 2-Year <i>Higher Nitec</i> DPP Course	Offered by	Minimum Qualifying GPA ^[3]	
			Year 1 Entry ^[4]	Year 2 Entry ^[5]
Applied Sciences				
Chemical Technology	Applied Chemistry	RP	2.5	-
	Biologics & Process Technology	NYP	2.5	-
	Chemical & Pharmaceutical Technology	NYP	2.5	-
	Common Engineering Programme	NYP	2.5	-
	Environmental & Marine Science	RP	2.5	-
	Nanotechnology & Materials Science	NYP	2.5	-
	Pharmaceutical Science	RP	2.5	-
Business & Services				
Accounting	Accountancy	NP	3.0	-
	Accountancy	SP	3.0	-
	Accountancy & Finance	NYP	3.0	-
	Accountancy & Finance	TP	3.0	-
	Banking & Finance	NP	3.0	-
	Banking & Finance	NYP	3.0	-
	Business	RP	3.0	-
	Business	TP	3.0	-
	Business Information Systems	RP	3.0	-
	Business Management	NYP	3.0	-
	Business Studies	NP	3.0	-
	Common Business Programme	NP	3.0	-
	Common Business Programme	NYP	3.0	-
	Common Business Programme	TP	3.0	-
	Common ICT Programme	RP	3.0	-
	Consumer Behaviour & Research	RP	3.0	-
	Financial Technology	RP	3.0	-
	Food & Beverage Business	NYP	3.0	-
	Hospitality & Tourism Management	NYP	3.0	-
	Hospitality & Tourism Management	TP	3.0	-
	International Trade & Business	NP	3.0	-
	International Trade & Logistics (<i>Previously known as Logistics & Operations Management</i>)	TP	3.0	-
	Mass Media Management	NYP	3.0	-
	Sport & Wellness Management	NYP	3.0	-
	Tourism & Resort Management	NP	3.0	-

Your child can qualify for **second year** Poly if he/she has met the GPA requirement.
(based on 2022 JIE 'N' booklet')



How can I Support My Child?

1) Build Relationships

- a) Spend quality time to build relationships, do things together as a family
- b) Show care, love and support
- c) Share with your child your personal experiences

2) Take Interest

- a) Take an interest in your child's life, friends, activities, school life
- b) Have regular chats (and not only on school work)
- c) Prioritise - **EL, Math and Science**

3) Reinforce good habits

- a) Use of digital devices
- b) Sleeping routines
- c) Read
- d) Help your child to grow and be self-directed learner: e.g.
 - i) How to make decisions
 - ii) How to set targets, review strategies, monitor progress, plan for improvement

4) Check-in with FTs regularly





An Overview of 2023

Term 1	Weighted Assessment 1 (WA1) ✓
Feb - March	Registration for National examinations✓
March	Project Confidence - Class bonding activities + Outdoor confidence elements ✓
End Term 1	CCA stand down for students, except for those involved in NSG/SYF✓
24 March	Parent Engagement Session
About 1 week before O level MTL paper	MTL and MTLB intensive for students taking the paper For other students, there will be a block timetable
June Hols	Students may be called back for consultation / coursework
Start of Term 3	Extended Curriculum – Targeted academic intervention
July to Aug	EL & MTL oral examinations
Late July	Preliminary Examinations
September	N Level examinations



Support from the school

Non-academic Support

- Engagement sessions by ITE on post-secondary education and multiple pathways to students and parents
- Group and individualised support by ECG Counsellor
- Study Skills (Examples: Growth Mind set, Time management and Memory Techniques)
- Regular class visits by School Leaders, Year Head/Assistant Year Head, mentoring by School Leaders for selected students
- Night Study Programme (tentatively in Term 3)





Subject Specific Strategies

English

- Holiday homework to address learning gaps
- Extended Curriculum in Term 3
- Small group consultations after school or via Zoom
- **Oral exam practice session** in June to prepare students for GCE-N Level oral exam in July
- **Timed practices in class**

Math

- **Differentiated topical revision worksheets** to serve different learning needs
- Other schs' Prelim papers/ TYS as weekly practice
- Extended curriculum in Term 3 for selected students; small group consultations
- **Early completion of syllabus** (Math) allows for sufficient revision time before prelim exams and national exams in Semester 2;
- Timed practice in class to guide students in time management and exam skills;
- Bite-sized quizzes in the form of Math games to reinforce understanding.



Subject Specific Strategies

Science

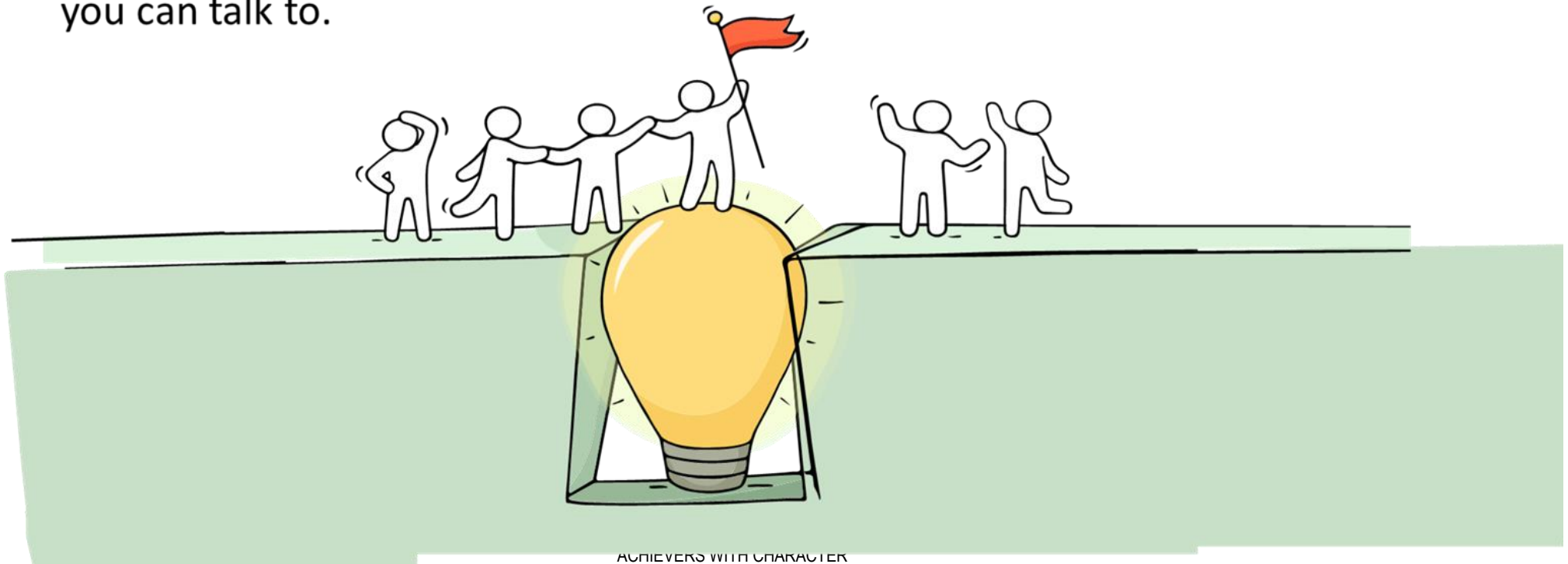
- **Resource/Revision packages** e.g. other schools' papers and summaries will be printed or available on online platforms for students. Students are strongly encouraged to practise **at least 5 years of TYS papers** before your N-level examination.
- Extended curriculum time will be used for timed practice.
- Identified students in Science Teaching And Revision **(STAR) programme** are provided with additional resources to stretch their academic potential.

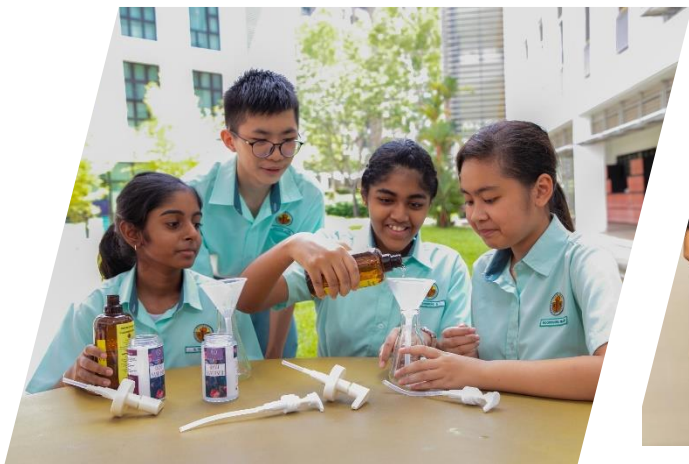


Reaching out for help is a sign of strength, not weakness.

*Is there
someone we
can speak with?*

If you have any concerns or are not coping, do reach out to someone you trust and speak with them. It could be a parent/guardian, teacher, School Counsellor or a friend that you can talk to.





FAQs



PUNGGOL SECONDARY SCHOOL

ACHIEVERS WITH CHARACTER



If he excels in ITE (Nitec) can he skip a year to proceed to Higher Nitec?

- Depends on your child's strength, interest and aspiration and GPA scored at Nitec.

“

Education & Career Guidance Counsellor

Ms Grace

”

Email: champion_grace@schools.gov.sg

ECG Appointment Booking
Form:

go.gov.sg/pssecg



thank
you